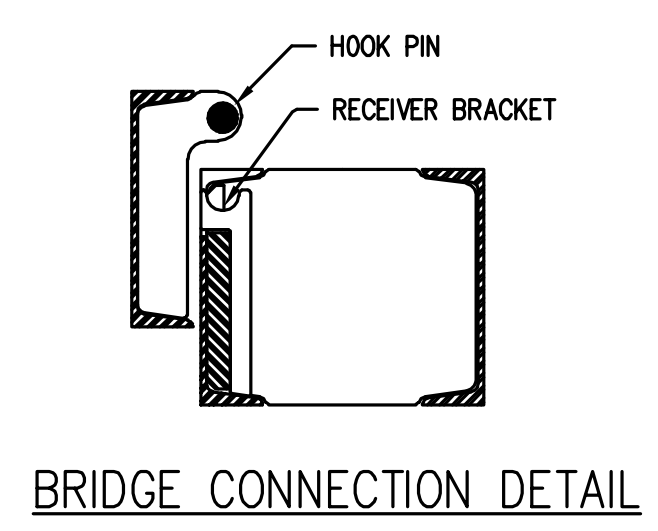
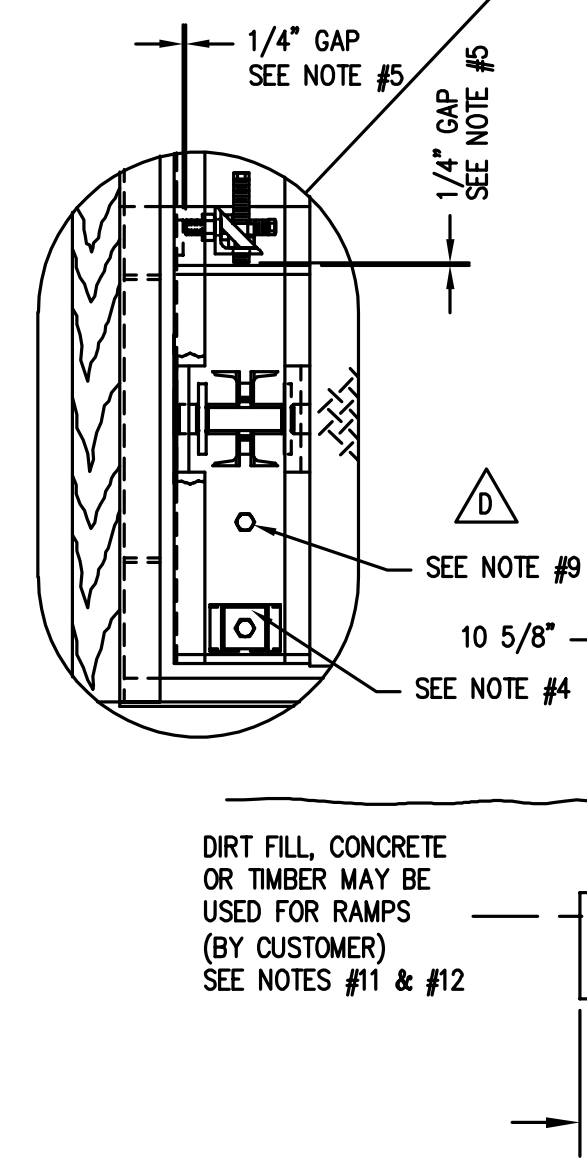
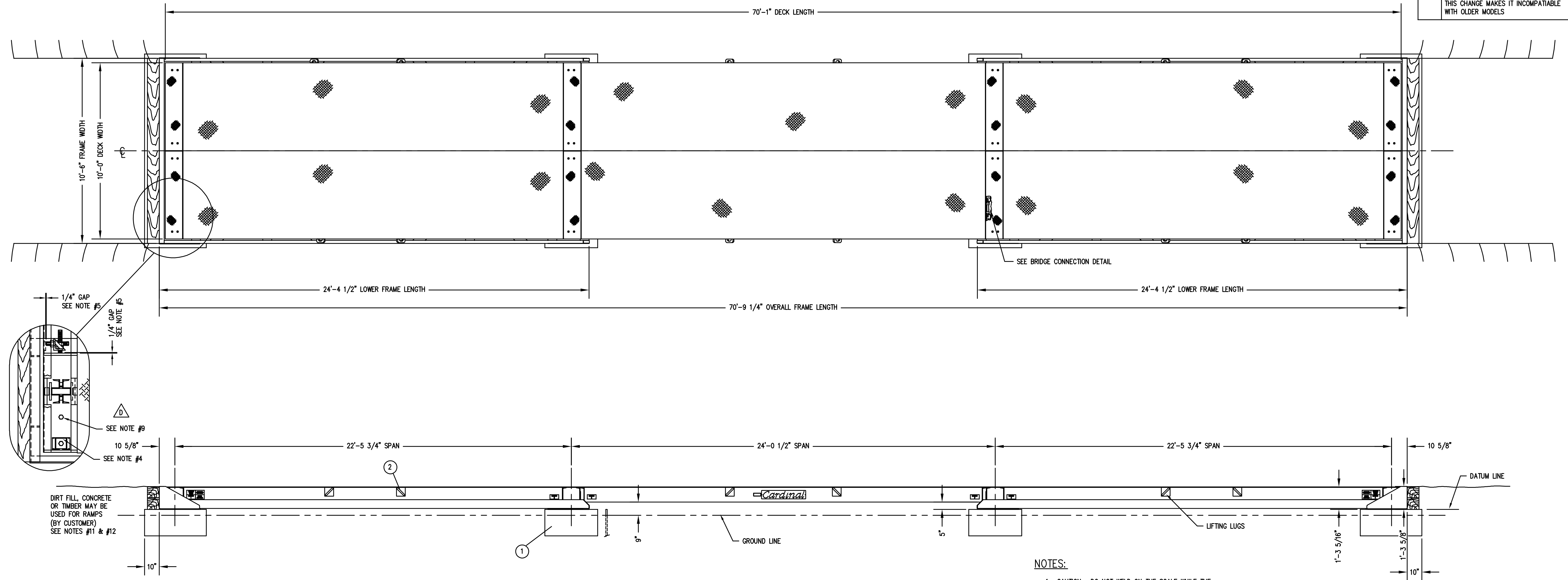


IMPORTANT! If your scale is equipped with access ways, such as manholes, it is the users responsibility to provide proper protection such as barriers, during the time they are open or removed.

REVISION RECORD			
LTR	DESCRIPTION	DATE	BY
B	UPDATE APPEARANCE OF INTERMEDIATE ACCESS PLATES. REVISE INSTALLATION NOTE 8 TO REFER TO CALLOUT THE EPR MANUAL.	3/4/99	16824 JAT/MLS
C	REVISE & REDIMENSION TO REFLECT CHANGES TO FRAME, PIERS & WEIGHBRIDGES. REVISE NOTE 3 OF GENERAL NOTES. REVISE NOTE 1 OF INSTALLATION NOTES.	1/31/00	20516 JAT
D	UPDATED END BOX ASSY DETAIL, UPDATED ACCESS PLATES, THIS CHANGE MAKES IT INCOMPATIBLE WITH OLDER MODELS.	5/21/01	21412 RN



NOTES:

- CAUTION: DO NOT WELD ON THE SCALE WHILE THE LOAD CELLS ARE IN PLACE.
- REFER TO THE INSTALLATION NOTE #4 FOR PROPER ELECTRICAL GROUNDING SPECIFICATIONS.
- THE WEIGHBRIDGE IS SUPPLIED IN THREE MODULES. MAXIMUM LIFT PER MODULE IS 15,000 POUNDS.
- REMOVE THE BOLTS AND SPACERS BEFORE WEIGHING, REPLACE BOLTS AND SPACERS FOR TRANSPORTING.
- ADJUST ALL BUMPER BOLTS TO 1/4" CLEARANCE.
- THE WEIGHT INDICATOR IS SHOWN ON A SEPARATE DRAWING.
- SAFETY BARRIERS ARE A USER/OWNER RESPONSIBILITY TO PREVENT VEHICLES FROM RUNNING OFF THE SIDES OF THE SCALE. FOR THE SAFETY OF VEHICLES USING THIS SCALE, SIDE RAILS AND/OR PROTECTIVE POSTS ARE AVAILABLE AS OPTIONAL EQUIPMENT.
- THE 9 1/8" MINIMUM CLEARANCE UNDER THE SCALE BRIDGE MUST BE MAINTAINED THE FULL LENGTH OF THE SCALE EXCEPT AT THE PIER AREAS.
- CUSTOMER SHALL FURNISH & INSTALL 1" EXPANSION ANCHORS. TYP. 8 PLACES
- CARDINAL SCALE MFG. CO. RECOMMENDS THAT THE CUSTOMER INSTALL PROTECTIVE CONDUIT/COVER FOR THE LOAD CELL CABLES WHENEVER THE CONDITION IS PRESENT THAT CAN RESULT IN DAMAGE OR ABRASION TO THE LOAD CELL CABLES.
- FILL FOR THE APPROACHES SHALL BE PLACED SO THAT FILL DOES NOT INTERFERE WITH ANY OF THE SCALE MECHANISM.
- ON THE APPROACH END OR ENDS OF A VEHICLE SCALE INSTALLED IN ANY ONE LOCATION FOR A PERIOD OF SIX MONTHS OR MORE, THERE SHALL BE A STRAIGHT APPROACH AS FOLLOWS:
 - (A) AT LEAST THE WIDTH OF THE PLATFORM AND
 - (B) AT LEAST ONE-HALF THE LENGTH OF THE PLATFORM BUT NOT REQUIRED TO BE MORE THAN 40 FEET.
 - (C) NOT LESS THAN 10 FEET OF ANY APPROACH ADJACENT TO THE PLATFORM SHALL BE CONSTRUCTED OF CONCRETE OR SIMILAR DURABLE MATERIAL TO INSURE THAT THIS PORTION REMAINS SMOOTH AND LEVEL AND IN THE SAME PLANE AS THE PLATFORM. HOWEVER, GRATING OF SUFFICIENT STRENGTH TO WITHSTAND ALL LOADS MAY BE INSTALLED IN THIS PORTION; AND FURTHER WHERE DEEMED NECESSARY FOR DRAINAGE PURPOSES, THE REMAINING PORTION OF THE APPROACH MAY SLOPE SLIGHTLY.

INSTALLATION:

- ESTABLISH THE CENTER LINE OF THE PIERS. SNAP A CHALK LINE 5'-3" OFF THE CENTER LINE. SNAP A LATERAL CHALK LINE 10" FROM THE EDGE OF THE END PIERS. (THESE LINES SHOULD BE 70'-9 1/4" APART)
- SET THE WEIGHBRIDGE AND LOWER FRAME MODULES ON THE PIERS SO THAT THE BULKHEAD ENDS ARE ON THE END PIER CHALK LINES AND THE EDGE OF THE LOWER FRAME LINES UP WITH THE LINE OFFSET FROM CENTER LINE. LIFTING LUGS PROVIDED ON ALL MODULES.
- PLACE THE CENTER WEIGHBRIDGE BETWEEN THE END WEIGHBRIDGES. MAKE SURE THE CENTER WEIGHBRIDGE HOOK PINS ALIGN WITH THE END WEIGHBRIDGE CATCHES. (SEE BLOWUP ON DRAWING)
- USING THE BRAIDED GROUND STRAP GROUND THE END WEIGHBRIDGES TO THE LOWER FRAMES AND THE CENTER WEIGHBRIDGE TO EACH OF THE END BRIDGES. GROUND ONE LOWER FRAME TO THE GROUND ROD.
- REMOVE THE DOWN BOLTS AND SPACERS. (SEE BLOWUP ON DRAWING) CHECK ALL LINKS TO SEE THAT THEY ARE PLUMB AND SUPPORTING LOAD. IF NEEDED SHIM UNDER STAND BEARING. ADJUST BUMPER TO 1/4" CLEARANCE.
- INSTALL CONNECTING CABLE BETWEEN J-BOXES, ON END BRIDGES, THROUGH PIPE IN CENTER BRIDGE. (SEE INTERCONNECTION ASSEMBLY DRAWING)
- CONSTRUCT APPROACH RAMP. DIRT FILL, CONCRETE OR TIMBER MAY BE USED. (SEE NOTE #11, MATERIAL SUPPLIED BY CUSTOMER)
- CALIBRATE THE SCALE ACCORDING TO INSTRUCTIONS IN THE EPR INSTALLATION MANUAL.

MODEL 12070-EPR-LF
 NOMINAL CAPACITY 120 TONS
 U.S.—CONCENTRATED LOAD CAPACITY 35 TONS
 CANADA—SECTIONAL CAPACITY
 CANADA—S.W.A. NO.
 SERIAL NUMBER "SALES ORDER NUMBER"

NOMINAL CAPACITY IS THE GROSS CAPACITY AS ASSIGNED BY THE MANUFACTURER.

CONCENTRATED LOAD CAPACITY (CLC) AS ASSIGNED BY THE MANUFACTURER, IS THE LOAD WHICH CAN BE PLACED ANYWHERE ON THE PLATFORM IN THE PRESCRIBED TEST PATTERN.

SECTIONAL CAPACITY IS THE MAXIMUM LOADING FOR EACH PAIR OF LOAD CELLS AS ADJACENT PLATFORMS (SPANS) ARE LOADED.

QTY.	QTY.	QTY.	ITEM	PART/DWG. NUMBER	DESCRIPTION	MATERIAL OR SOURCE	WT. EACH
	1	3	3502-D399-0A		INTERCONNECTION ASSY		55.0
	1	2	0102-D120-0A		WEIGHBRIDGE SCHEMATIC		32729
	1	1	0102-C121-0A		PIER PLAN		
		-0A	ASSY				

UNLESS OTHERWISE SPECIFIED TOLERANCE ON DIMENSIONS ARE:
 ANGLES ± 1/2"
 INTEGERS/FRACTIONS ± 1/16 IN.
 DECIMALS (.X) ± .03 IN.
 DECIMALS (.XX) ± .01 IN.
 DECIMALS (.XXX) ± .005 IN.
 NOTE: WHOLE NUMBERS MUST BE WRITTEN XX.000 TO INVOLVE DECIMAL TOLERANCES.

Cardinal
 Cardinal Scale Manufacturing Co.
 WEIGH BRIDGE DETECTOR FULLER WEIGHING SYSTEMS

TITLE FINAL ASSY: FULL ELECTRONIC PORTABLE TRUCK SCALE
 4-SECTION: 120 TON CAPACITY; 70' X 10' X 5/16" CHECKER DECK
 SCALE 3/8" = 12" DO NOT SCALE DRAWING NEXT ASSEMBLY

DR. MLS DATE 7/24/98
 CH. MLS DATE 7/24/98

THIS DRAWING IS THE PROPERTY OF THE CARDINAL SCALE MFG. CO. AND SHALL NOT BE USED NOR REPRODUCED EITHER WHOLLY OR IN PART EXCEPT WITH WRITTEN AUTHORIZATION. ALL RIGHTS OF DESIGN OR INVENTION ARE RESERVED.

MODEL 12070-EPR-LF SHEET 1 OF 1 DWG. NO. 0102-D122-0A REV. D