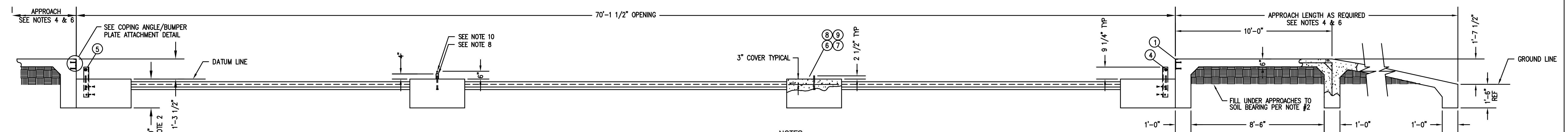
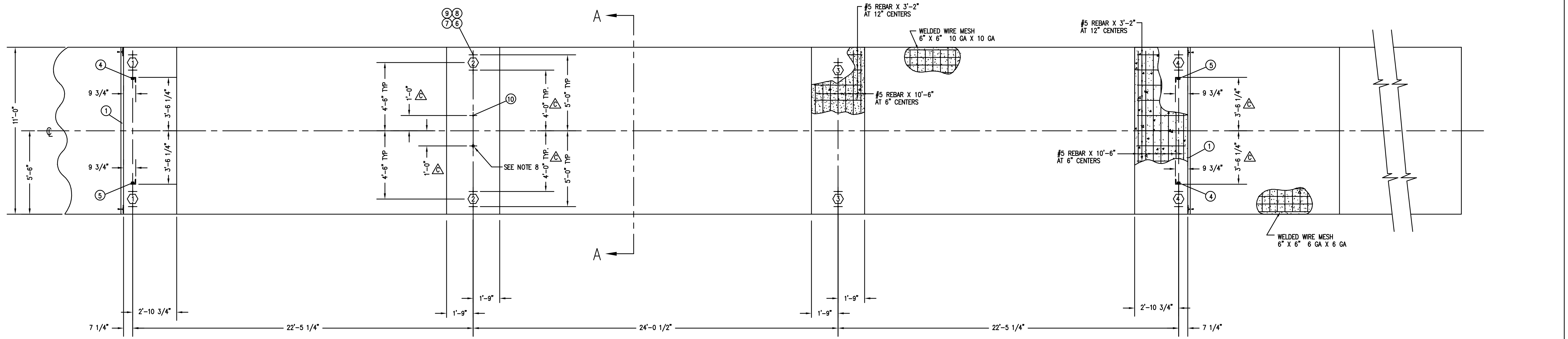


PIER LOADINGS AT 40 TON CLC	
PIER	LOADING
①	45.0 KIPS
②	51.0 KIPS
③	51.0 KIPS
④	45.0 KIPS

REVISION RECORD			
LTR	DESCRIPTION	DATE	BY
A	RELEASED FOR PRODUCTION	8/16/00	21020 BAS/MLS
B	CORRECTED NOTE 7	11/10/00	21175 BAS
C	UPDATED FOUNDATION TO MATCH LOAD CELL STAND CHANGES. MOVED ITEM 10 AND CONDUIT UNDER SCALE. ITEM 8 WAS 6024-0016. 10'-6" REBAR WAS 11'-6" RECALCULATED CONCRETE & EXCAVATION FOR MAIN PIERS IN NOTE 7	9/5/01	21420 SC/MLS



- NOTES:**
- ITEMS 1 THRU 10 ARE FURNISHED BY CARDINAL SCALE MFG. CO.
  - THE SCALE FOUNDATION AS SHOWN IS SUFFICIENT FOR FIRM SOIL AND GOOD CONCRETE. THE MINIMUM SOIL BEARING SHALL BE 3,000 POUNDS PER SQUARE FOOT AND THE MINIMUM CONCRETE STRENGTH SHALL BE 3,000 POUNDS PER SQUARE INCH, 28 DAY. FOR UNUSUAL SOIL CONDITIONS OR DEEP FROST PENETRATION, ALTER THE FOUNDATION AS REQUIRED. THE FOOTING SHALL BE BELOW THE FROST LINE.
  - CARDINAL SCALE MFG. CO. SHALL NOT BE RESPONSIBLE FOR THE STABILITY OF THE FOUNDATION.
  - THE FOUNDATION CONTRACTOR SHALL CONTACT THE STATE WEIGHT AND MEASURES DIVISION FOR STATE FOUNDATION REQUIREMENTS.
  - WORK FROM THE CENTERLINES WHEN ERECTING FORMS AND SETTING BOLTS.
  - ON THE APPROACH END OR ENDS OF A VEHICLE SCALE INSTALLED IN ANY ONE LOCATION FOR A PERIOD OF SIX MONTHS OR MORE, THERE SHALL BE A STRAIGHT APPROACH AS FOLLOWS:
    - AT LEAST THE WIDTH OF THE PLATFORM AND AT LEAST ONE-HALF THE LENGTH OF THE PLATFORM BUT NOT REQUIRED TO BE MORE THAN 40 FEET, AND
    - NOT LESS THAN 10 FEET OF ANY APPROACH ADJACENT TO THE PLATFORM SHALL BE CONSTRUCTED OF CONCRETE OR SIMILAR DURABLE MATERIAL TO INSURE THAT THIS PORTION REMAINS SMOOTH AND LEVEL AND IN THE SAME PLANE AS THE PLATFORM. HOWEVER, GRATING OF SUFFICIENT STRENGTH TO WITHSTAND ALL LOADS MAY BE INSTALLED IN THIS PORTION, AND FURTHER WHERE DEMAILED NECESSARY FOR DRAINAGE PURPOSES, THE REMAINING PORTION OF THE APPROACH MAY SLOPE SLIGHTLY.
  - EXCAVATION AND CONCRETE REQUIRED FOR SCALE FOUNDATION AS SHOWN: MAIN PIERS: 8.5 CU. YDS. EXCAVATION; 10.4 CU. YDS. CONCRETE. SLAB FLOOR: 5.7 CU. YDS. EXCAVATION; 7.6 CU. YDS. CONCRETE. APPROACHES (10'-0" EACH END): 2.4 CU. YDS. EXCAVATION; 8.8 CU. YDS. CONCRETE
  - TRANSMISSION CABLE FROM LOAD CELL TO INDICATOR SHALL BE IN 1" MINIMUM SIZE CONDUIT AT LEAST 24" FROM THE CLOSEST ELECTRICAL LINE. THEY MAY CROSS AT 90° ONLY.
  - CAUTION:** DO NOT WELD ON STRUCTURE WHILE ELECTRONIC LOAD CELLS ARE IN THE SYSTEM.
  - REFER TO DRAWING 3502-C435-GS FOR PROPER ELECTRICAL GROUNDING SPECIFICATIONS.
  - REINFORCING ROD AND WELDED WIRE MESH ARE NOT FURNISHED BY CARDINAL SCALE MFG. CO. THE REBAR SHALL CONFORM TO ASTM A615, GRADE 60. THE WELDED WIRE MESH SHALL CONFORM TO ASTM A-185.
  - TOP OF PIERS ARE TO BE SMOOTH AND LEVEL WITHIN ±1/8". (ALL PIERS ARE TO BE WITHIN 1/4".)

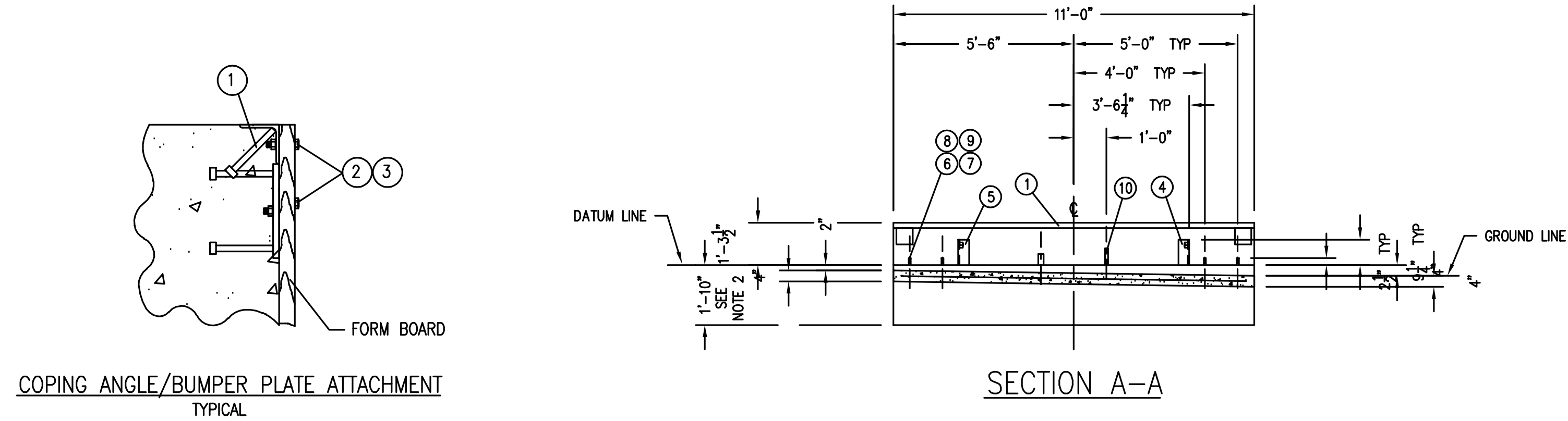
QTY.	QTY.	QTY.	ITEM	PART/DWG. NUMBER	DESCRIPTION	MATERIAL OR SOURCE	WT. EACH
	1	10	3502-8006-68		GROUNDING KIT		15.8
	16	9	6024-0063		MALLABLE IRON WASHER	7/8"	0.46
	16	8	6024-0055		LOCK WASHER	3/4"	0.12
	16	7	6013-0125		HEX NUT	3/4-10UNC-2B	0.12
	16	6	6007-0280		HEX HEAD BOLT	3/4-10UNC-2A X 10"	1.4
	2	5	0103-0128-1A		CHECK STAND WELDMENT		27.5
	2	4	0103-0128-0A		CHECK STAND WELDMENT		27.5
	14	3	6013-0065		HEX NUT	3/8-16UNC-2B	0.01
	14	2	6007-0050		HEX HEAD BOLT	3/8-16UNC-2A X 1 1/2"	0.06
	2	1	0103-B131-0A		COPING ANGLE/BUMPER PLATE ASSEMBLY	11'-0" REF	39.2
238.8	WT.				PARTS/MATERIAL LIST		

UNLESS OTHERWISE SPECIFIED TOLERANCE ON DIMENSIONS ARE:  
 ANGLES ± 1/2"  
 INTEGERS/FRACTIONS ± 1/16 IN.  
 DECIMALS (.X) ± .03 IN.  
 DECIMALS (.XX) ± .01 IN.  
 DECIMALS (.XXX) ± .005 IN.  
 NOTE: WHOLE NUMBERS MUST BE WRITTEN XX.000 TO INVOKE DECIMAL TOLERANCES.

**Cardinal**  
 Cardinal Scale Manufacturing Co.  
 VERO BEACH, FLORIDA 33470  
 CARDINAL DETECTO FULLER WEIGHING SYSTEMS

**TITLE** FOUNDATION PLAN  
 (70'-1 1/2" X 11'-0", 135 TON CAPACITY, 40 TON CLC)

**SCALE** 1" = 36" **DO NOT SCALE DRAWING** **NEXT** ASSEMBLY 0105-D001-0A  
 DR. BAS DATE 5/8/00  
 CH. DATE  
 MODEL 13570-EPR SHEET 1 OF 1 DWG. NO. 0105-D005-0A REV. C



COPING ANGLE/BUMPER PLATE ATTACHMENT TYPICAL

SECTION A-A