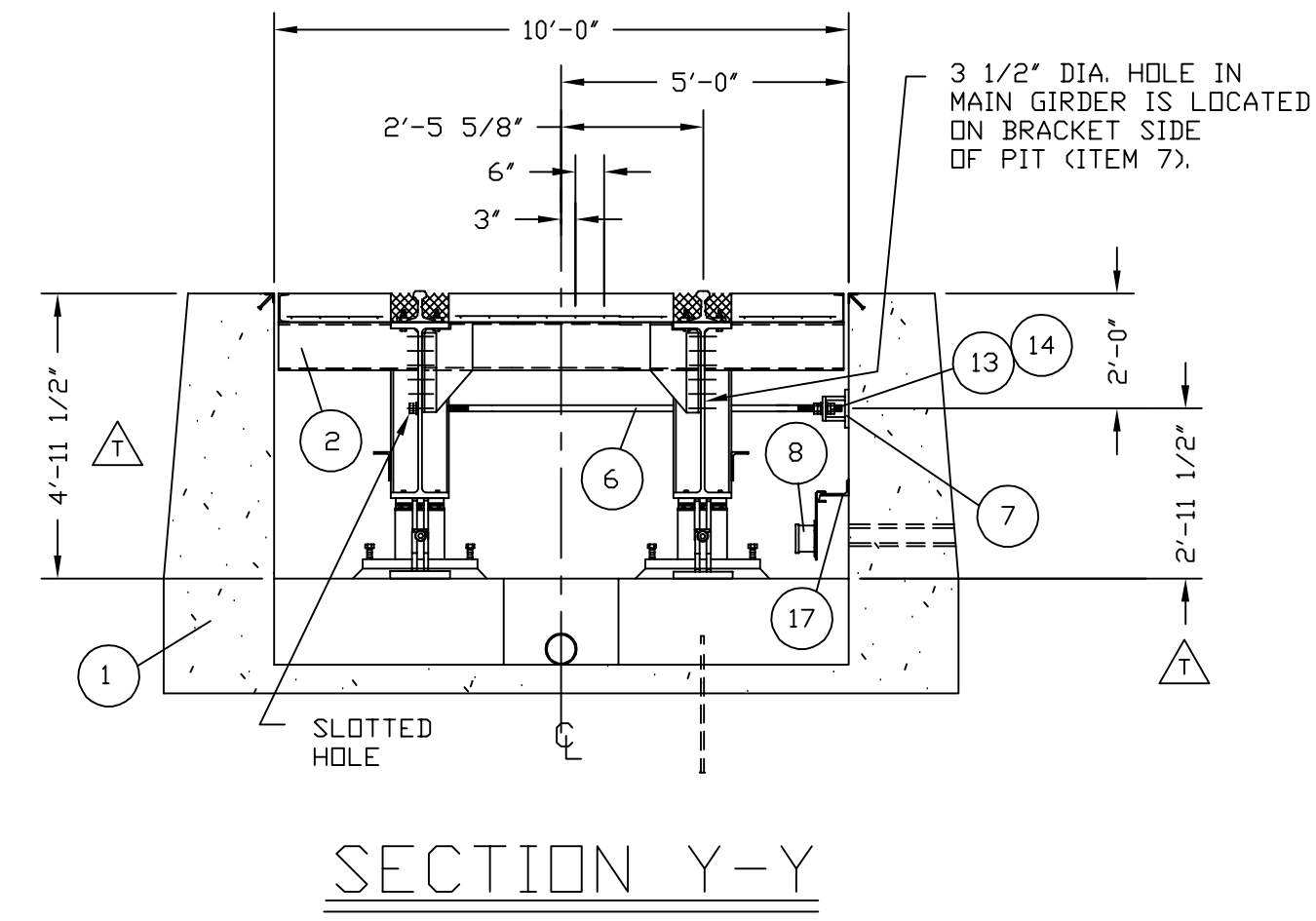
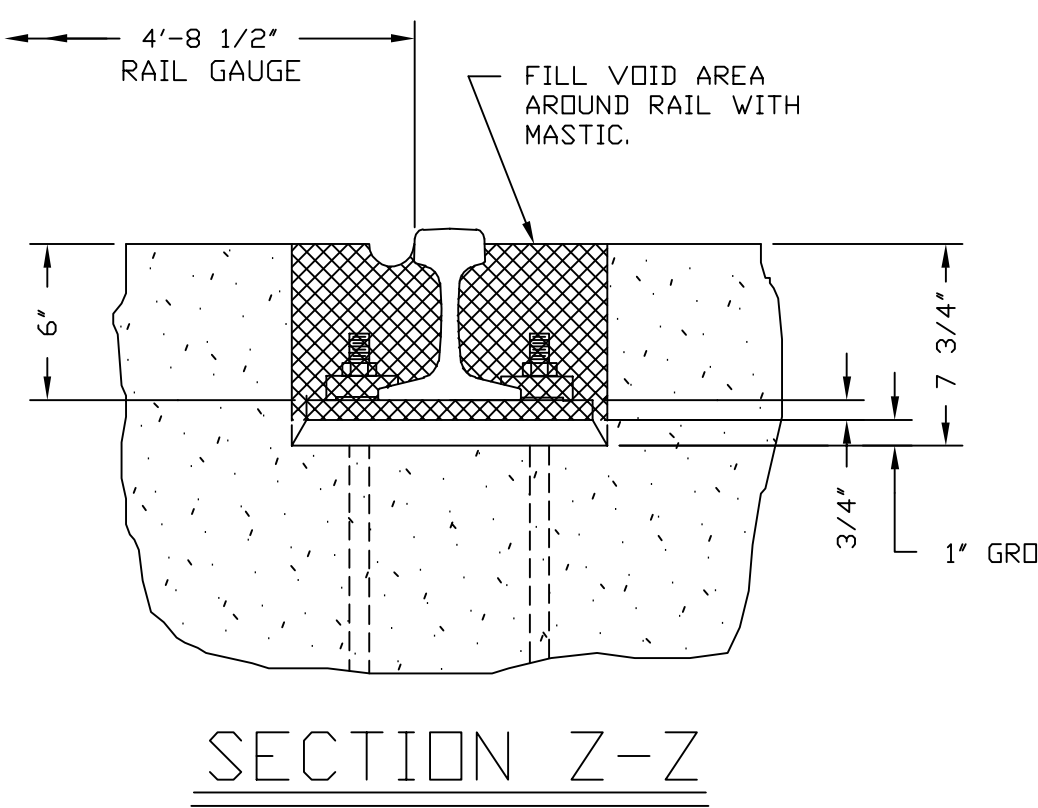
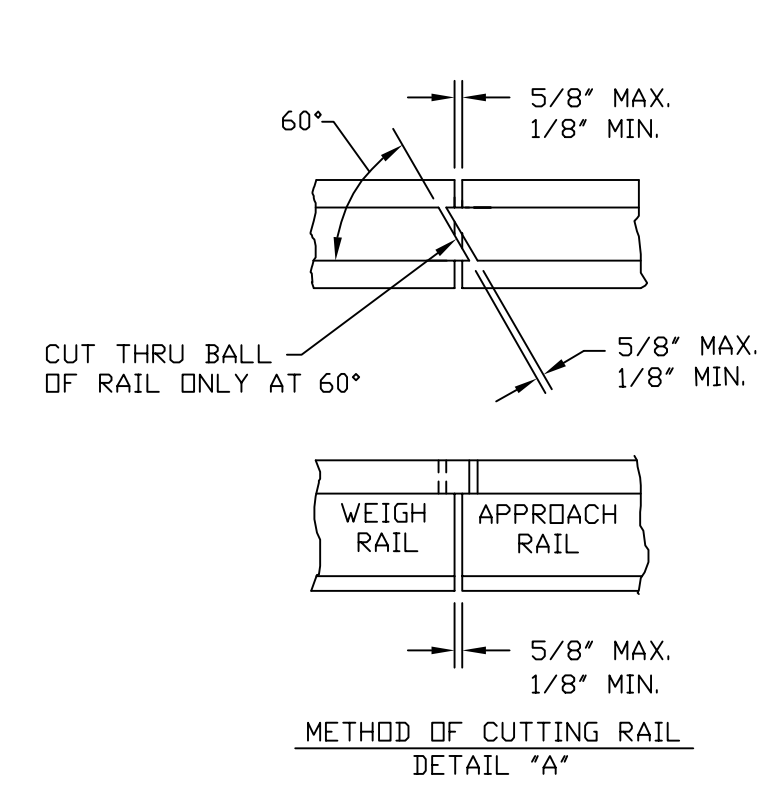


**IMPORTANT!** If your scale is equipped with access ways, such as manholes, it is the users responsibility to provide proper protection such as barriers, during the time they are open or removed.

REVISION RECORD			
LTR	DESCRIPTION	DATE	BY
L	ECD #12911	9/11/92	C.W.
M	6024-0017 WAS 6024-0015 ECD #13386	4/6/93	GL
N	ITEM 8 WAS 3502-D029-2A	9-16-94	14066 C.H.
P	ADDED ANTI-CREEP DEVICES, ADDED NOTES 12,13 & 14, ADDED ITEMS 18,19,20, & 21	7-28-95	14578 KA
R	ITEM 8 WAS 3502-D368-0A	9-1-95	14566 KA
S	ITEM 17 QTY. WAS 4, REPOSITIONED JUNCTION BOX MOUNTS ANTI CREEP DEVICES AND BOLTS WERE OPTIONAL.	5/15-01	21408 GC/MLS
T	CHANGE THE FOLLOWING DIMENSION DUE TO A CHANGE IN THE MAIN GIRDER BEAM: 6'-11 1/2" WAS 6'-11 1/4" 4'-11 1/2" WAS 4'-11 1/4" 3'-0 3/4" WAS 3'-0 1/2" 2'-11 1/2" WAS 2'-11 1/4"	1/29/02	21739 JAT
U	UPDATED APPEARANCE OF WEIGHBRIDGE	10/7/02	21946 GC/MLS

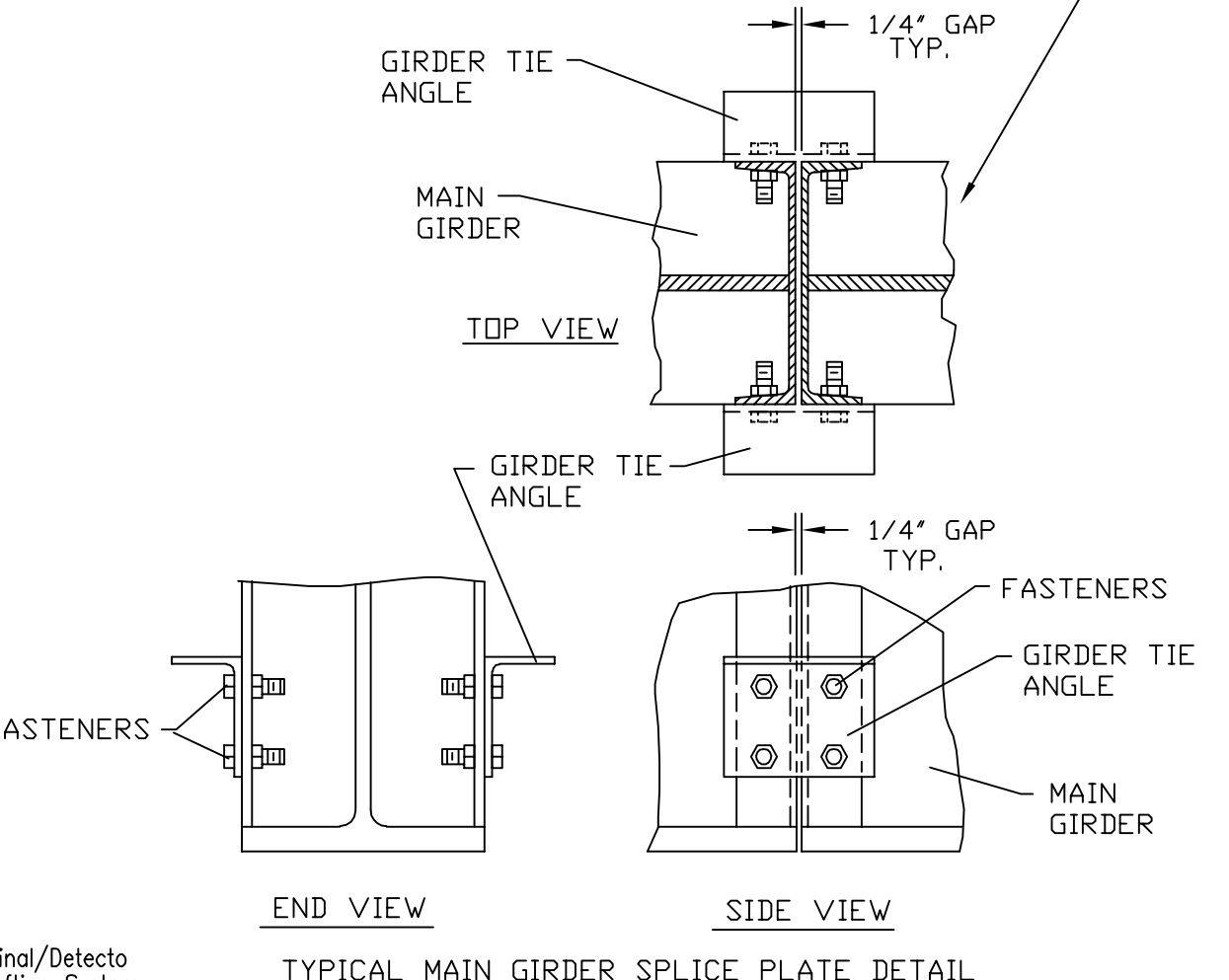
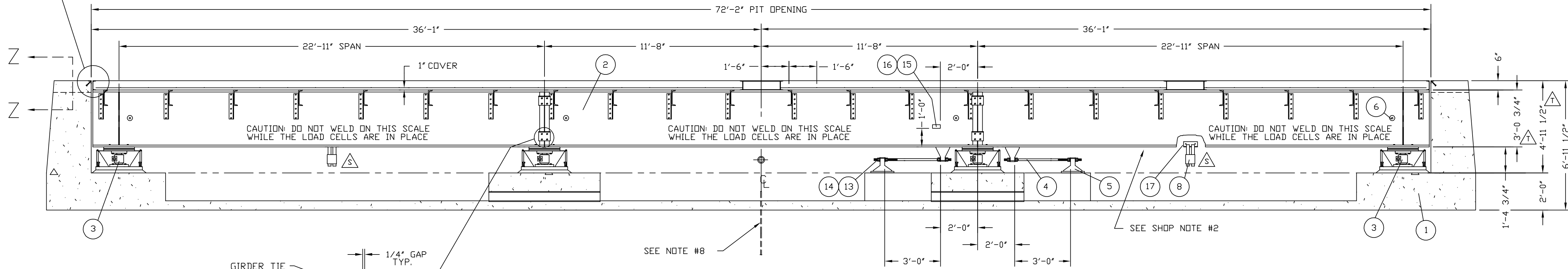
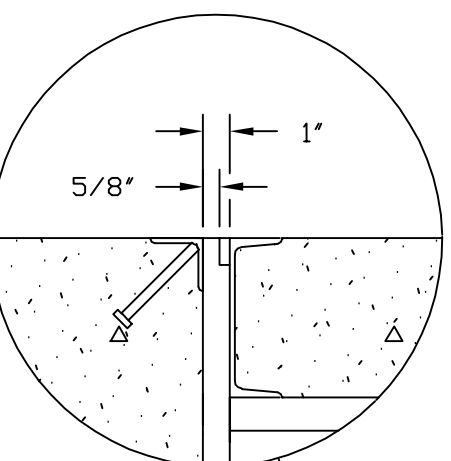
**DECK CHANNEL FIELD WELDING**  
FIELD WELD THE DECK CHANNELS TOGETHER AND FIELD WELD THE DECK CHANNELS TO THE OUTRIGGERS AND MAIN GIRDERS AS SHOWN AND FIELD WELD THE DIAGONAL BRACES TO THE MAIN GIRDERS AND BOTTOM OF CROSSMEMBERS.

REINFORCING ROD REQUIRED FOR DECK				
ITEM	QTY.	SIZE	LOCATION	WT.EA.
R1	98	#4 X 1'-8"	OUTRIGGER @ 1'-6" CENTERS	1.1
R2	49	#4 X 3'-8"	CENTER @ 1'-6" CENTERS	2.5
R3	48	#4 X 25'-0"	LENGTH @ 6" CENTERS WITH 1'-6" LAP	16.7
TOTAL WEIGHT OF DECK REBAR = 1031.9#				
DECK REINFORCING IS FURNISHED BY CARDINAL SCALE MFG. CO. ONLY WHEN SPECIFIED ON THE SALES ORDER. DECK REINFORCING IS SHIPPED IN 20'-0" LENGTHS AND WILL REQUIRE FIELD CUTTING AND WELDING TO ACHIEVE LENGTHS AS SHOWN.				

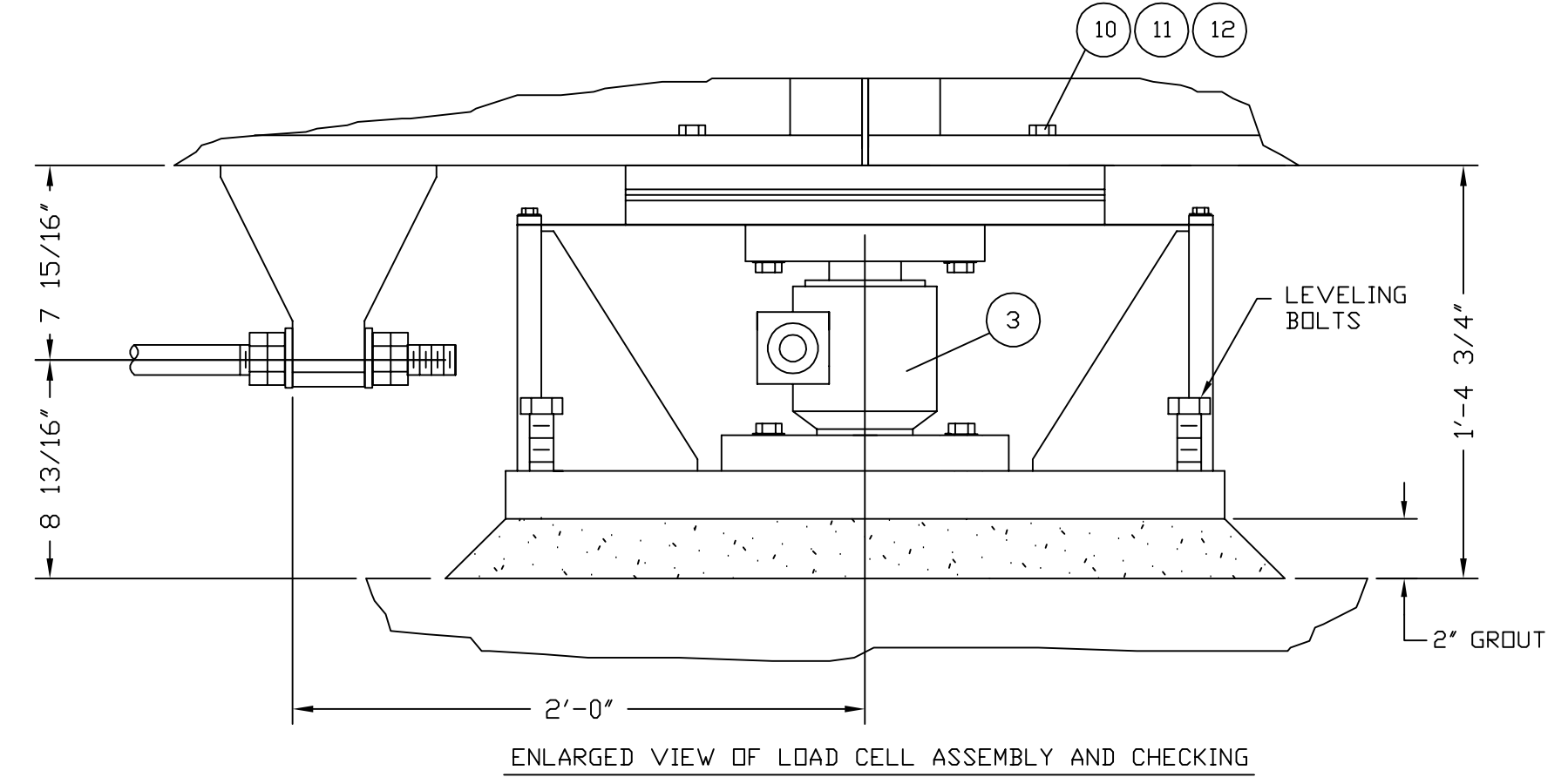


**GENERAL NOTES:**

- THIS DRAWING IS IN COMPLIANCE WITH THE SCALE MANUFACTURERS ASSOCIATION RECOMMENDATION FOR DESIGN AND INSTALLATION OF PIT TYPE SCALES.
- AT LEAST ONE OPENING SHALL BE PROVIDED THRU THE SCALE PLATFORM OR PIT WALL TO PROVIDE ACCESS TO THE SCALE AND PIT. MANHOLE FRAMES AND COVERS FOR THE SCALE PLATFORM ARE FURNISHED BY CARDINAL SCALE MFG. CO. ONLY WHEN SPECIFIED ON THE SALES ORDER.
- APPROXIMATELY 104 CUBIC YARDS OF CONCRETE IS REQUIRED FOR SCALE PLATFORM AS SHOWN.
- ADJUST THE LOAD CELL BASE TO THE CORRECT ELEVATION AND GROUT AFTER THE SCALE HAS BEEN COMPLETELY SET. TWO INCHES HAS BEEN ALLOWED ABOVE THE DATUM LINE FOR GROUT.
- GROUT SHALL BE OF AN APPROVED NON-SHRINKING EPOXY TYPE. REF. US. GROUT CORP. 5-STAR; SIKKA CHEMICAL; REMXND; OR EQUAL.
- ALL CHECK RODS MUST BE LEVEL AND TRUE TO PLANE BOTH HORIZONTALLY AND VERTICALLY, AFTER THE SCALE HAS BEEN COMPLETELY SET.
- DO NOT WELD ON THE STRUCTURE WHILE THE ELECTRONIC LOAD CELLS ARE IN THE SYSTEM.
- SEE CARDINAL DRAWING 3502-C138-ES FOR PROPER ELECTRICAL GROUNDING SPECIFICATIONS.
- THE WEIGHT INDICATOR IS SHOWN ON A SEPARATE DRAWING.
- LOAD CELL DATA:  
LOAD CELL CAPACITY = 200,000#  
DEAD LOAD @ CELL = 11,000#  
MULTIPLE @ CELL = 1
- CARDINAL SCALE MFG. CO. RECOMMENDS THAT THE CUSTOMER INSTALL PROTECTIVE CONDUIT/COVER FOR THE LOAD CELL CABLES WHENEVER THE CONDITION IS PRESENT THAT CAN RESULT IN DAMAGE OR ABRASION TO THE LOAD CELL CABLES.
- WEIGHRAIL ANTI CREEP DEVICES SHALL BE INSTALLED ON EACH WEIGHRAIL, ANTI-CREEP DEVICES ARE FURNISHED BY CARDINAL SCALE MFG. CO. ONLY WHEN SPECIFIED ON THE SALES ORDER. REFER TO CARDINAL DRAWING 0810-C020-0A FOR PROPER ANTI-CREEP DEVICES AND FASTENERS.
- ITEMS 18, 19, 20, & 21 ARE FURNISHED ONLY WHEN SPECIFIED ON THE SALES ORDER.
- A.R.E.A. SPECIFICATION: LENGTH & WEIGHT: THE WEIGHT AND SECTION OF WEIGHRAILS SHALL BE AS LARGE AS IS CONSISTENT WITH SURROUNDING YARD TRACK CONDITIONS BUT SHOULD NOT BE LESS THAN 115# PER YARD. RAILS SHALL HAVE FULL SECTION AND BE IN GOOD CONDITION. RAILS SHALL BE ONE PIECE FULL LENGTH OF SCALE.



- SHOP NOTES:**
- STEEL STAMP THE FOLLOWING INFORMATION ON THE DATA PLATE:  
MODEL NUMBER - 7280-RSCA  
SERIAL NUMBER - SALES ORDER NUMBER  
SECTIONAL CAPACITY - 180 TONS  
GROSS CAPACITY - REFER TO SALES ORDER
  - USING WHITE PAINT, STENCIL THE FOLLOWING INFORMATION ON THE CROSSMEMBER SIDE OF EACH MAIN GIRDER:  
CAUTION! DO NOT WELD ON THIS SCALE WHILE THE LOAD CELLS ARE IN PLACE.



144	21		RAIL CLIPS	K-26	MIDWEST STEEL	
144	20	6024-0060	LOCK WASHER	1"		0.08
144	19	6013-0165	HEX NUT	1"-8 UNC-2B		0.29
144	18	6007-0372	HEX HEAD BOLT	1"-8 UNC-2A X 4"		1.24
2	17	0849-B024	JUNCTION BOX MOUNT			8.8
4	16	6680-0073	RIVET			
1	15	5930-B018-08	DATA PLATE			0.03
64	14	6013-0175	HEX NUT	1 1/4"-7 UNC-2B		0.56
32	13	0142-B184-0A	SPHERICAL WASHER			0.66
32	12	6024-0017	FLAT WASHER	5/8"		0.08
32	11	6024-0051	LOCK WASHER	5/8"		0.03
32	10	6007-0210	HEX HEAD BOLT	5/8"-11 UNC-2A X 2 1/2"		0.31
4	9	0869-B007	APPROACH PLATE			39.7
1	8	3502-D391-0A	INTERCONNECTION ASSEMBLY			20.0
4	7	0149-B036	CHECK BRACKET	WALL		33.6
4	6	0859-B002	CHECK ROD	WALL		31.6
4	5	0849-C001	CHECK BRACKET	FLOOR		137.0
4	4	0859-B001	CHECK ROD	FLOOR		16.7
8	3	0849-C003-51	LOAD CELL ASSEMBLY	CUST. DWG. 0848-C007		755.6
1	2	0840-B002	WEIGHBRIDGE			39483
1	1	0840-D009	PIT PLAN	LIGHTLY REBARRED PIT 0840-D017 HEAVILY REBARRED PIT 0840-D021		822.3

QTY.	QTY.	QTY.	ITEM	PART/DWG. NUMBER	DESCRIPTION	MATERIAL OR SOURCE	WT. EACH
			WT.	PARTS/MATERIAL LIST			
UNLESS OTHERWISE SPECIFIED TOLERANCE ON DIMENSIONS ARE: ANGLES ± 1/2" INTEGERS/FRACTIONS ± 1/16 IN. DECIMALS (X) ± .03 IN. DECIMALS (XX) ± .01 IN. DECIMALS (XXX) ± .005 IN. NOTE: WHOLE NUMBERS MUST BE WRITTEN XX.000 TO INVOLVE DECIMAL TOLERANCES.							
TITLE: FINAL ASSEMBLY E-80 A.R.E.A. RAILWAY TRACK SCALE 72' X 10' X 6" CONCRETE DECK							
SCALE: 5/16"=1' DO NOT SCALE DRAWING NEXT ASSEMBLY							
THIS DRAWING IS THE PROPERTY OF THE CARDINAL SCALE MFG. CO. AND SHALL NOT BE USED NOR REPRODUCED EITHER WHOLLY OR IN PART EXCEPT WITH WRITTEN AUTHORIZATION. ALL RIGHTS OF DESIGN OR INVENTION ARE RESERVED.							
DR. K. ADAMS		DATE 12-26-89		ASSEMBLY			
CH. C. WALLS		DATE 4-4-90					
MODEL 180 T.P.S.		SHEET 1 OF 1		DWG. NO. 0840-D008		REV. U	