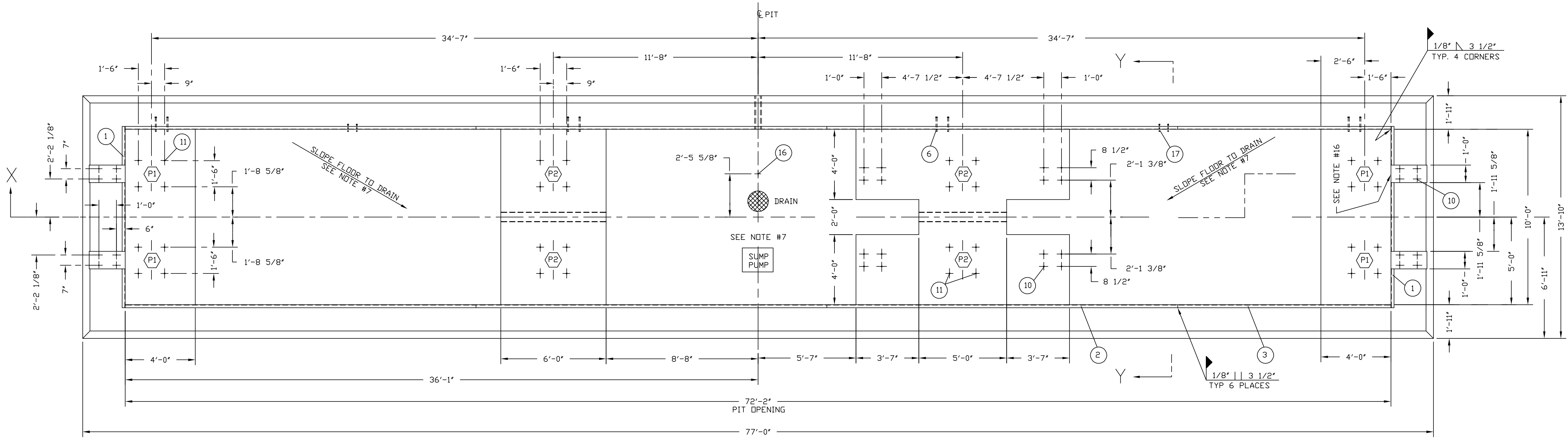
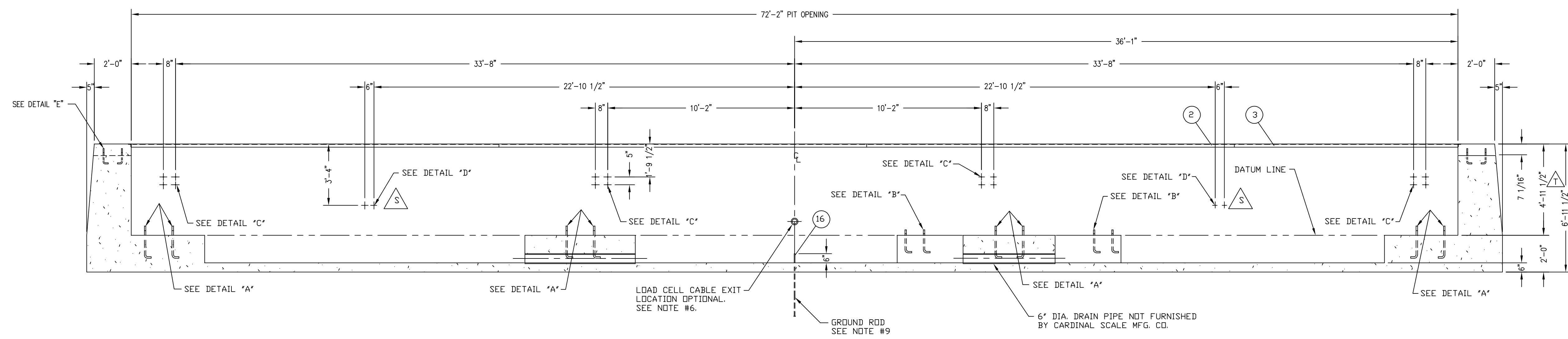


PIER LOADINGS AT COOPER E-80 LOAD RATING	
PIER	LOADING
P1	154 KIP
P2	162 KIP

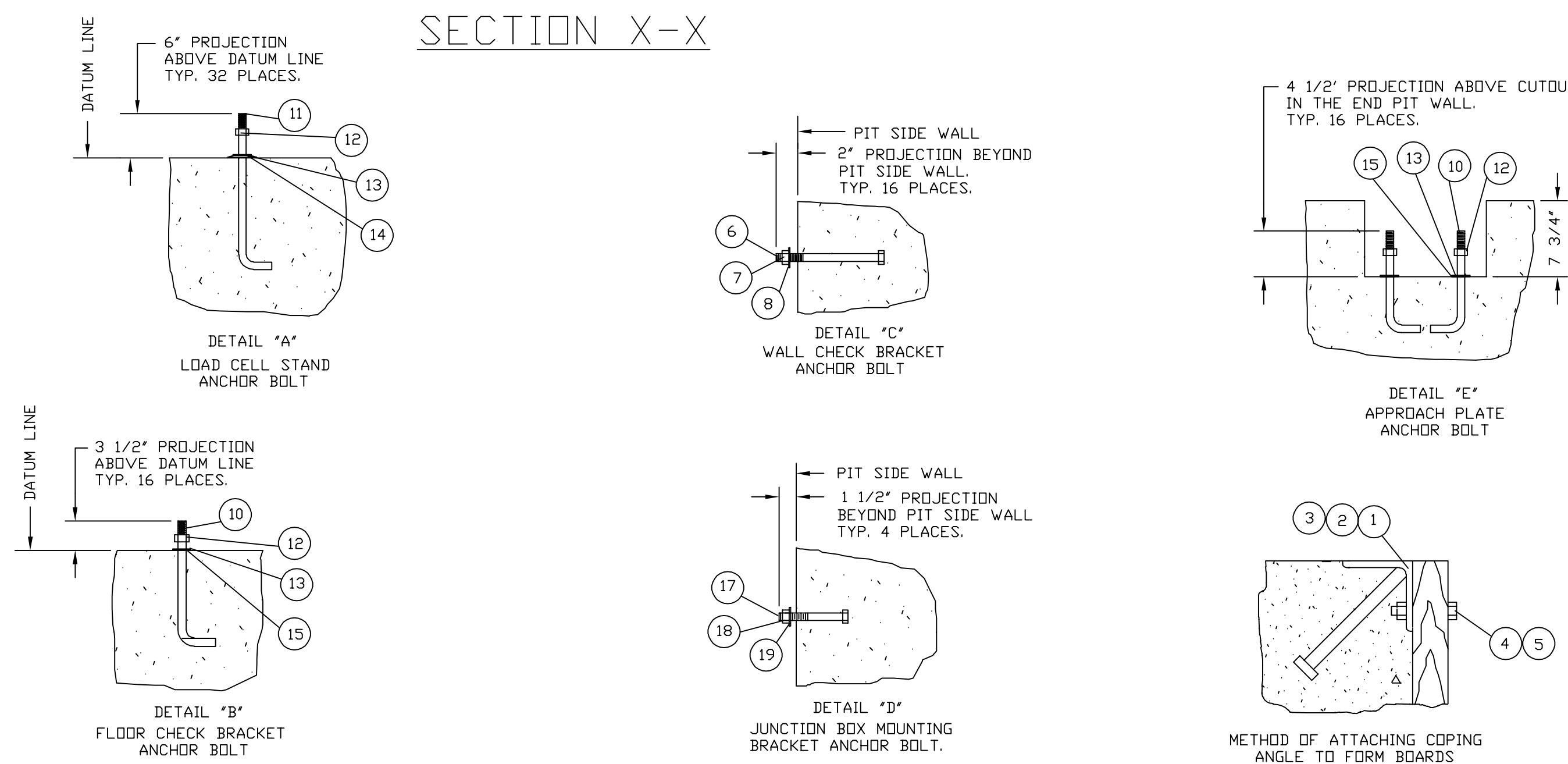
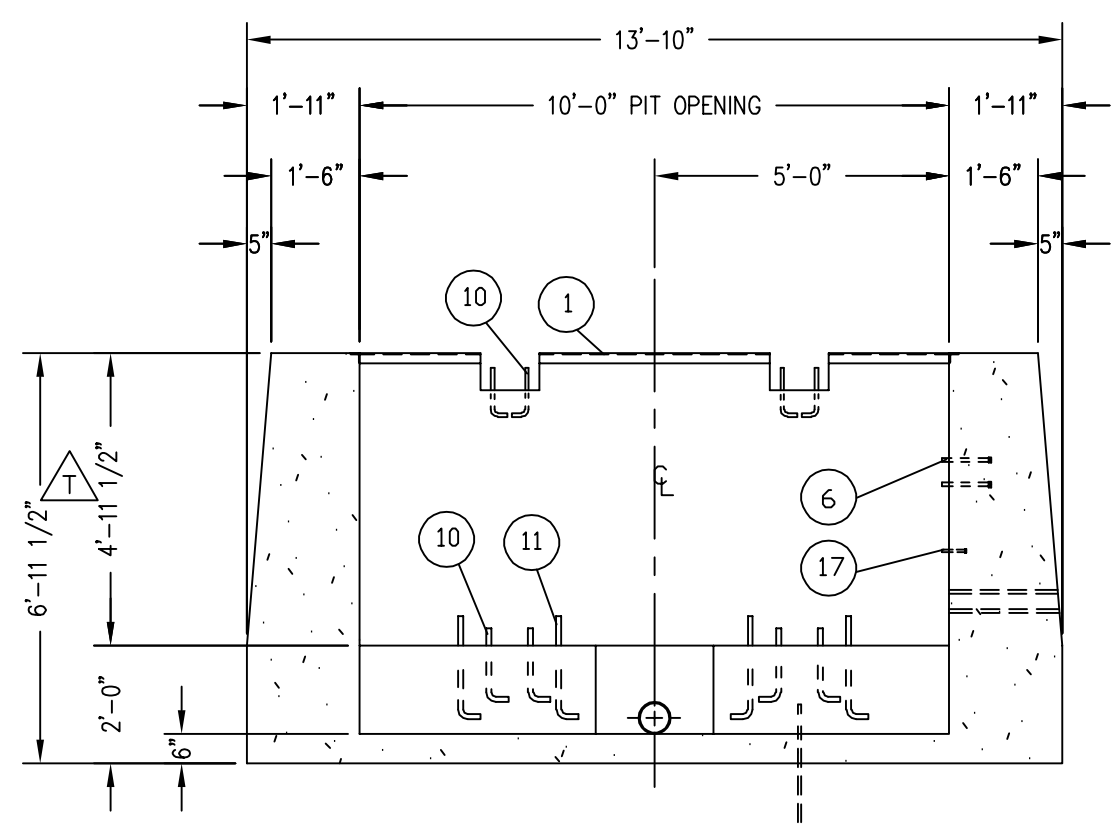
REVISION RECORD				
LTR	DESCRIPTION	DATE	BY	
L	REDRAWN ON CAD	12/15/89	K.A.	
M	ECD: 11978	12/10/90	K.A.	
N	ITEM 10 WAS 4 1/2" THREAD LENGTH	10/26/94	14169 C.H.	
P	ITEM 10 WAS 6007-0351 HEX HEAD BOLT, ITEM 11 WAS 6007-0353 HEX HEAD BOLT	6/17/97	15666 RN	
R	ITEM 16 WAS 3502-B006-58	7/9/98	16203 EMJ	
S	ITEMS 17, 18, 19 WERE QTY. 8 MOVED JUNCTION BOX MTG. BOLTS. UPDATED NOTE 2 TO RAIL ROAD STANDARDS	5/16/01	21408 GC/MLS	
T	INCREASE DEPTH OF PIT BY 1/4" DUE TO CHANGE IN SIZE OF MAIN ORDER BEAM RECALCULATE EXCAVATION & CONCRETE	1/29/02	21739 JAT	



- NOTES:
- THE PIT CONTRACTOR SHALL CONTACT THE SERVICING RAILROAD AND THE STATE WEIGHTS AND MEASURES DIVISION FOR RECOMMENDATIONS AND SPECIFICATIONS NOT SHOWN ON THIS DRAWING.
 - THE SCALE PIT AS SHOWN IS SUFFICIENT FOR FIRM SOIL AND GOOD CONCRETE. THE MINIMUM SOIL BEARING SHALL BE 4000 POUNDS PER SQUARE FOOT. THE MINIMUM CONCRETE STRENGTH SHALL BE 4000 POUNDS PER SQUARE INCH, 28 DAY. FOOTINGS SHALL BE 12 INCHES BELOW THE FROST LINE. FOR UNUSUAL SOIL CONDITIONS OR DEEP FROST PENETRATION, ALTER THE PIT AS REQUIRED.
 - THE SCALE PIT SHALL BE CONSTRUCTED OF REINFORCED CONCRETE. THE QUALITY OF MATERIALS AND METHOD OF MIXING AND PLACING THE CONCRETE SHALL CONFORM TO THE A.R.E.A. SPECIFICATION FOR REINFORCED CONCRETE PART 1, CHAPTER 9, (S.2-22.1).
 - CARDINAL SCALE MFG. CO. SHALL NOT BE RESPONSIBLE FOR STABILITY OF THE PIT.
 - WORK FROM CENTERLINES WHEN ERECTING FORMS AND SETTING ANCHOR BOLTS, TOPS OF PIERS AND WALLS MUST BE SMOOTH, LEVEL, AND TRUE TO PLANE.
 - TRANSMISSION CABLE FROM LOAD CELL TO INDICATOR MUST BE IN 1 INCH MINIMUM SIZE STEEL CONDUIT AT LEAST 24 INCHES FROM THE CLOSEST ELECTRICAL LINE. THEY MAY CROSS AT 90° ONLY. LOCATION OF TRANSMISSION CABLE IS OPTIONAL.
 - THE PIT FLOOR SHALL BE PITCHED TO A COMMON POINT FOR DRAINAGE AND SHALL BE SMOOTH AND FREE FROM POCKETS IN WHICH WATER MAY STAND. IF THE PIT FLOOR IS BELOW SUBSURFACE WATER LEVEL, THE PIT SHALL BE DRAINED FROM ITS LOWEST POINT INTO A SUMP ADEQUATELY EQUIPPED WITH AUTOMATIC MEANS FOR REMOVAL OF WATER AS IT COLLECTS.
 - SEE CARDINAL DRAWING 0810-D005 FOR RECOMMENDED APPROACHES AND APPROACH ANTI-CREEP DEVICE.
 - SEE CARDINAL DRAWING 3502-C138-5 FOR PROPER ELECTRICAL GROUNDING SPECIFICATIONS.
 - TO ALLOW FOR VARIATION IN PIER HEIGHT AND STANDARD MILL STEEL TOLERANCES, TWO INCHES HAS BEEN ALLOWED ABOVE THE DATUM LINE FOR GRUTING.
 - THE PIT SHALL BE PROVIDED WITH SUFFICIENT ILLUMINATION TO PERMIT INSPECTION OF THE SCALE. IF PERMANENT LIGHTS AND OUTLETS ARE USED, PROVISIONS SHOULD BE MADE FOR CONDUIT THRU THE PIT WALL OR FLOOR.
 - AT LEAST ONE OPENING SHALL BE PROVIDED THRU THE SCALE PLATFORM OR PIT WALL TO PROVIDE ACCESS TO THE SCALE AND PIT. MANHOLE FRAMES AND COVERS FOR THE SCALE PLATFORM ARE FURNISHED BY CARDINAL SCALE MFG. CO. ONLY WHEN SPECIFIED IN THE SALES ORDER.
 - DO NOT WELD ON THE STRUCTURE WHILE THE ELECTRONIC LOAD CELLS ARE IN THE SYSTEM.
 - EXCAVATION REQUIRED FOR SCALE PIT AS SHOWN: 275 CUBIC YARDS.
 - CONCRETE REQUIRED FOR SCALE PIT AS SHOWN: 104 CUBIC YARDS.
 - FIELD CUT OPENINGS THRU END PIT COPING ANGLES COMPLETELY FORMED.



QTY.	QTY.	QTY.	ITEM	PART/DWG. NUMBER	DESCRIPTION	MATERIAL OR SOURCE	WT. EACH
	4	19	6024-0048	LOCK WASHER	1/2"		0.01
	4	18	6013-0085	HEX NUT	1/2"-13 UNC-2B		0.04
	4	17	6007-1007	HEX HEAD BOLT	1/2"-13 UNC-2A X 5"		0.32
	1	16	3502-B006-60	GROUNDING KIT			30.5
	32	15	6024-0027	FLAT WASHER	1"		0.2
	32	14	6024-0066	WASHER	1" MALLABLE IRON		0.64
	64	13	6024-0060	LOCK WASHER	1"		0.08
	64	12	6013-0165	HEX NUT	1"-8 UNC-2B		0.29
	32	11	0849-B092-08	ANCHOR BOLT	1"-8 UNC-2A X 21"		5.02
	32	10	0849-B091-08	ANCHOR BOLT	1"-8 UNC-2A X 15"		3.69
	16	8	6024-0054	LOCK WASHER	3/4"		0.08
	16	7	6013-0125	HEX NUT	3/4"-10 UNC-2B		0.12
	16	6	6007-0280	HEX HEAD BOLT	3/4"-10 UNC-2A X 10"		1.4
	36	5	6013-0065	HEX NUT	3/8"-16 UNC-2B		0.02
	36	4	6007-0050	HEX HEAD BOLT	3/8"-16 UNC-2A X 1 1/2"		0.07
	2	3	0819-B004	SIDE PIT COPING ANGLE	12'-2"		32.1
	2	2	0119-B005	SIDE PIT COPING ANGLE	20'-0"		52.4
	2	1	0119-B007	END PIT COPING ANGLE	10'-4"		27.6



QTY.	QTY.	QTY.	ITEM	PART/DWG. NUMBER	DESCRIPTION	MATERIAL OR SOURCE	WT. EACH
		825.4	WT.		PARTS/MATERIAL LIST		
UNLESS OTHERWISE SPECIFIED TOLERANCE ON DIMENSIONS ARE: ANGLES ± 1/2" INTEGERS/FRACTIONS ± 1/16 IN. DECIMALS (X) ± .03 IN. DECIMALS (XX) ± .01 IN. DECIMALS (XXX) ± .005 IN. NOTE: WHOLE NUMBERS MUST BE WRITTEN XX.000 TO INVOKE DECIMAL TOLERANCES.							
TITLE: PIT PLAN E-80 A.R.E.A. RAILWAY TRACK SCALE 72" X 10' X 6" CONCRETE DECK SCALE: 5/16"=1' DO NOT SCALE NEXT DRAWING DR. K. ADAMS DATE 12-15-89 ASSEMBLY 0840-D008 CH. C.W. DATE 4-3-90 MODEL 7280 RSCA SHEET 1 OF 1 DWG. NO. 0840-D009 REV. T							