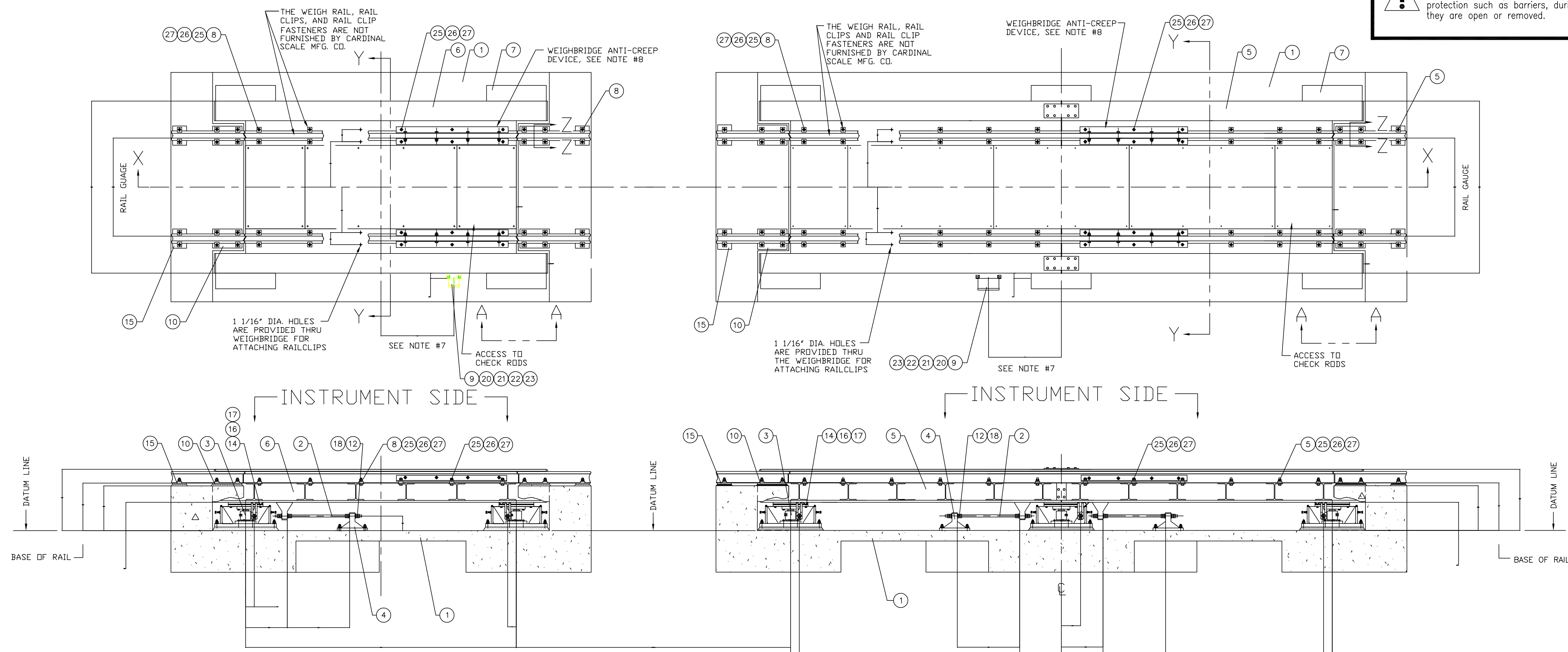
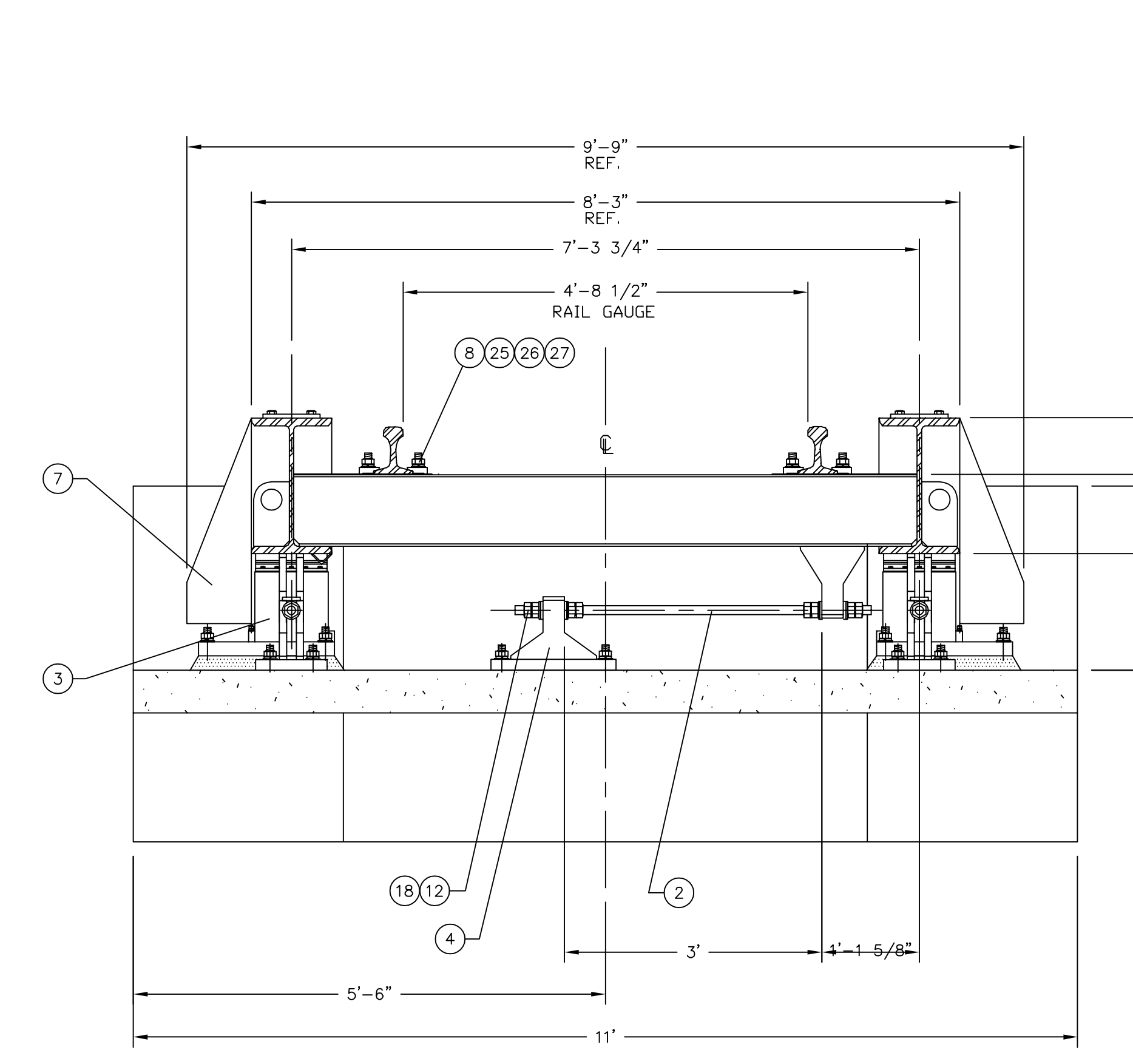


REVISION RECORD			
LTR	DESCRIPTION	DATE	BY
A	RELEASED FOR PRODUCTION	9/28/93	KA/CW
B	ITEM 9 WAS 3502-D126-1A	9/27/93	14066 CH/SC
C	ADD ITEMS 8, 25, 26 & 27 REVISE NOTE #8 & ADD NOTE #10 QTY OF ITEMS 14, 16 & 17 WAS 32 ITEM 17 PART NO. WAS 6024-0015	11/9/94	14188 JAT
D	CORRECTED DIMENSION IN SECTION Y-Y 2'-1 3/4" WAS 2'-2 1/4"	4/30/02	21873 GC/MLS

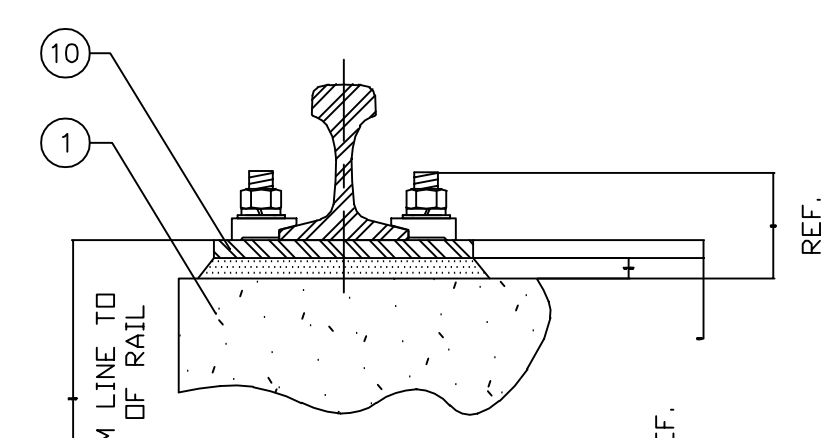
IMPORTANT! If your scale is equipped with access ways, such as manholes, it is the users responsibility to provide proper protection such as barriers, during the time they are open or removed.



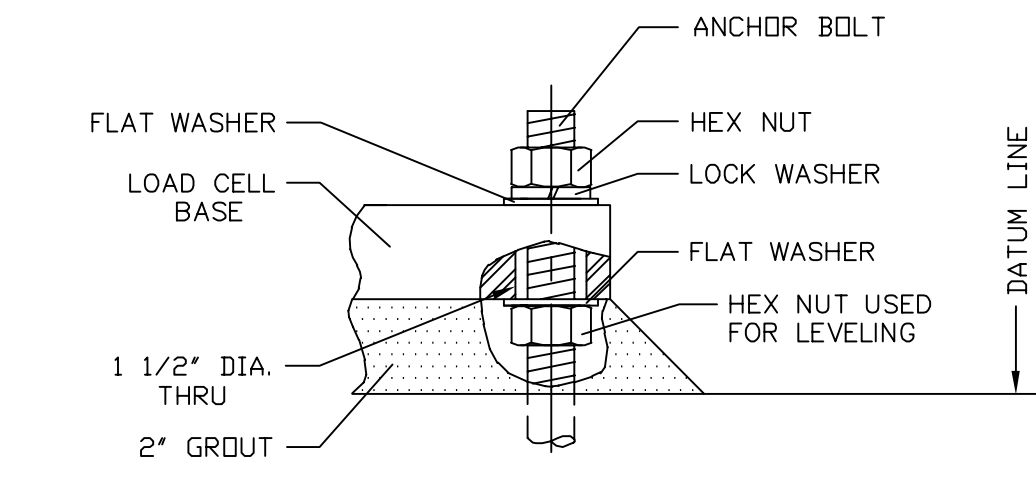
- NOTES:**
- ADJUST LOAD CELL BASE TO CORRECT ELEVATION AND GROUT AFTER SCALE HAS BEEN COMPLETELY SET. TWO INCHES HAS BEEN ALLOWED ABOVE THE DATUM LINE FOR GROUT. SEE NOTE #9.
 - ALL CHECK RODS SHALL BE LEVEL AND TRUE TO PLANE BOTH HORIZONTALLY AND VERTICALLY AFTER THE SCALE HAS BEEN COMPLETELY SET.
 - CAUTION: DO NOT WELD ON THE WEIGHBRIDGE AND/OR RELATED STRUCTURE WHILE IN CONTACT WITH THE LOAD CELLS.
 - REFER TO CARDINAL DRAWING 3502-C138-ES FOR PROPER ELECTRICAL GROUNDING SPECIFICATIONS.
 - REMOVE COVERS ITEM 7 FOR ACCESS TO LOAD CELLS.
 - THE CUSTOMER SHALL SPECIFY THE DISTANCE BETWEEN THE SCALES.
 - FASTEN LEG MOUNTS TO JUNCTION BOXES. POSITION JUNCTION BOXES AS SHOWN AND ATTACH LEG MOUNTS TO FOUNDATION USING 1/2" X 4" EXPANSION BOLTS. EXPANSION BOLTS ARE NOT FURNISHED BY CARDINAL SCALE MFG. CO.
 - WEIGHRAIL ANTI-CREEP DEVICES SHOULD BE INSTALLED ON EACH WEIGHRAIL. ANTI-CREEP DEVICES ARE OPTIONAL EQUIPMENT AND ARE FURNISHED BY CARDINAL SCALE MFG. CO. ONLY WHEN SPECIFIED ON THE SALES ORDER. REFER TO CARDINAL DRAWING 0810-C018-0A AND 0810-C019-0A FOR PROPER ANTI-CREEP DEVICES AND FASTENERS.
 - GROUT SHALL BE OF AN APPROVED NON-SHRINKING EPOXY TYPE. REF: U.S. GROUT CORP., 5-STAR; SIKKA CHEMICAL; REXNORD; OR EQUAL.
 - ITEMS 8, 25, 26 AND 27 ARE OPTIONAL EQUIPMENT AND ARE FURNISHED ONLY WHEN SPECIFIED ON THE SALES ORDER.
 - CARDINAL SCALE MFG. CO. RECOMMENDS THAT THE CUSTOMER INSTALL PROTECTIVE CONDUIT/COVER FOR THE LOAD CELL CABLES WHENEVER THE CONDITION IS PRESENT THAT CAN RESULT IN DAMAGE OR ABRASION TO THE LOAD CELL CABLES.



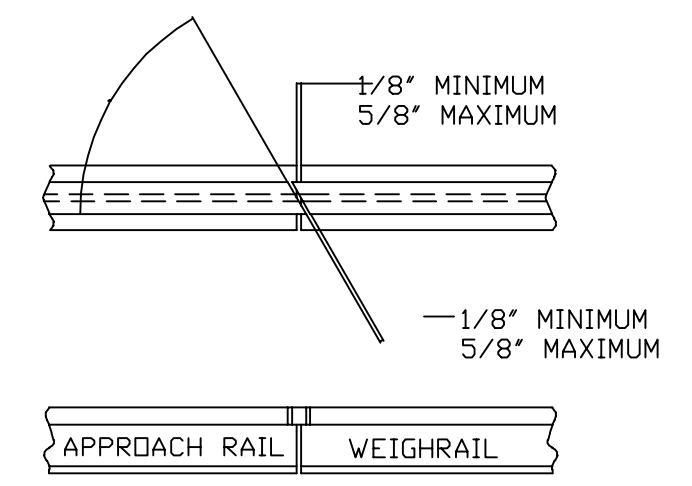
SECTION X-X



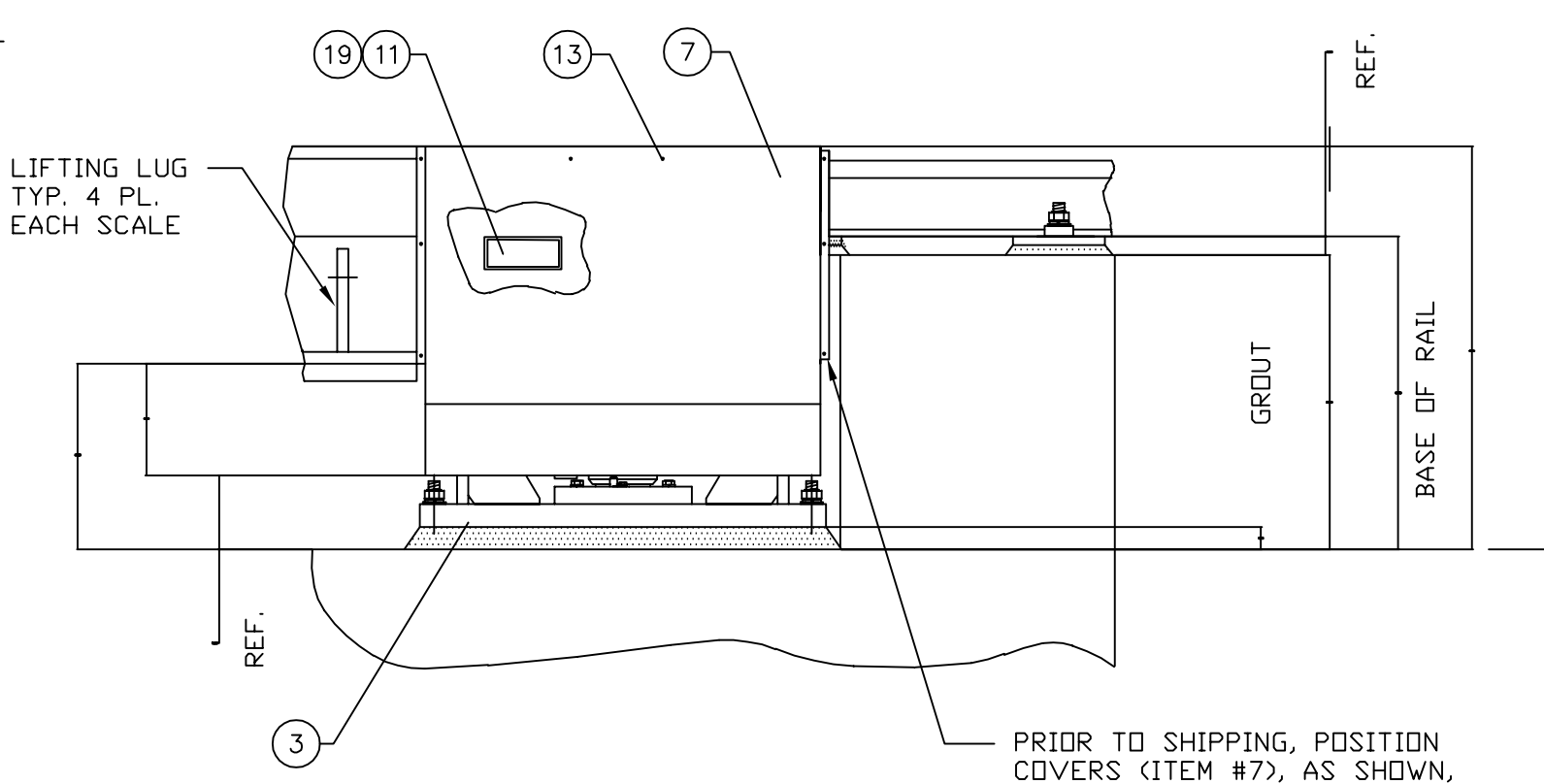
SECTION Z-Z
TYPICAL 8 PLACES



COMBINATION LEVELING AND ANCHOR BOLT
TYPICAL 4 PLACES EACH LOAD CELL ASSY.



METHOD OF CUTTING RAIL



VIEW A-A
SCALE: 3/4" = 1'-0"

QTY.	ITEM ASSY	PART/DWG. NUMBER	DESCRIPTION	MATERIAL OR SOURCE	WT. EACH
72	27	6024-0060	LOCK WASHER	1"	0.08
72	26	6013-0165	HEX NUT	1"-8 UNC-2B	0.29
72	25	6007-0372	HEX HEAD BOLT	1"-8 UNC-2A X 4'	1.24
4	24	5930-D021-08	NAME PLATE		4.1
8	23	6024-0039	LOCK WASHER	1/4"	0.01
8	22	6013-0045	HEX NUT	1/4"-20 UNC-2B	0.01
8	21	6007-0011	HEX HEAD BOLT	1/4"-20 UNC-2A X 1"	0.01
4	20	0869-C024-0A	LEG MOUNT		2.1
2	19	5930-B019-08	DATA PLATE		0.03
88	18	6013-0176	HEX NUT	1 1/4"-7 UNC-2B	0.56
40	17	6024-0017	FLAT WASHER	5/8"	0.08
40	16	6024-0051	LOCK WASHER	5/8"	0.02
8	15	0819-C042	RAIL PLATE		18.7
40	14	6007-0200	HEX HEAD BOLT	5/8"-11 UNC-2A X 2"	0.26
88	13	6021-1416	HEX WASHER HEAD SELF-DRILLING SCREW	TEKS 3 #12-14 X 3/4"	0.01
44	12	0142-B184-0A	SPHERICAL WASHER		0.66
8	11	6680-0073	RIVET	AD32ABS USM FASTENER	
8	10	0869-B007	APPROACH PLATE		39.7
1	9	3502-D374-0A	INTERCONNECTION ASSEMBLY		20.0
96	8		RAIL CLIPS	K-26 MIDWEST STEEL	
10	7	0869-B001	COVER		29.2
1	6	0862-B008-0A	WEIGHBRIDGE		7488
1	5	0862-C001	WEIGHBRIDGE		13965
11	4	0869-B008	FLOOR CHECK BRKT		131.6
10	3	0869-C034-0A	LOAD CELL ASSY	DWG. FOR CUSTOMER 0869-C033-0A	392.0
11	2	0859-B001	CHECK ROD		17.3
1	1	0862-D009-0A	FOUNDATION PLAN		676.5

UNLESS OTHERWISE SPECIFIED TOLERANCE ON DIMENSIONS ARE:
 ANGLES ± 1/2"
 INTEGERS/FRACTIONS ± 1/16 IN.
 DECIMALS (X) ± .03 IN.
 DECIMALS (XX) ± .01 IN.
 DECIMALS (XXX) ± .005 IN.
 NOTE: WHOLE NUMBERS MUST BE WRITTEN XX.000 TO INVOKE DECIMAL TOLERANCES.

Cardinal
 Cardinal Scale Manufacturing Co.
 FULLER WEIGHING SYSTEMS

TITLE FINAL ASSEMBLY: E-80 FULL ELECTRONIC LOW PROFILE RAILWAY TRACK SCALE 13' X 26' LONG A.R.E.A.
 SCALE 3/8" = 12" DO NOT SCALE NEXT DRAWING ASSEMBLY

DR. KA DATE 9/28/93
 CH. C WALLS JR. DATE 28 SEPT 93

MODEL 1326-80 LPRA-100 SHEET 1 OF 1 DWG. NO. 0862-D010-0A REV. D