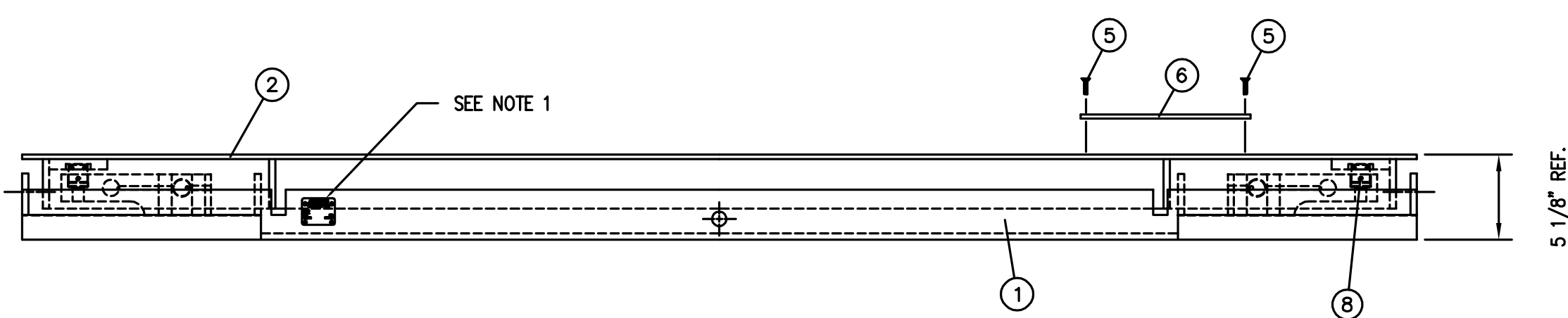
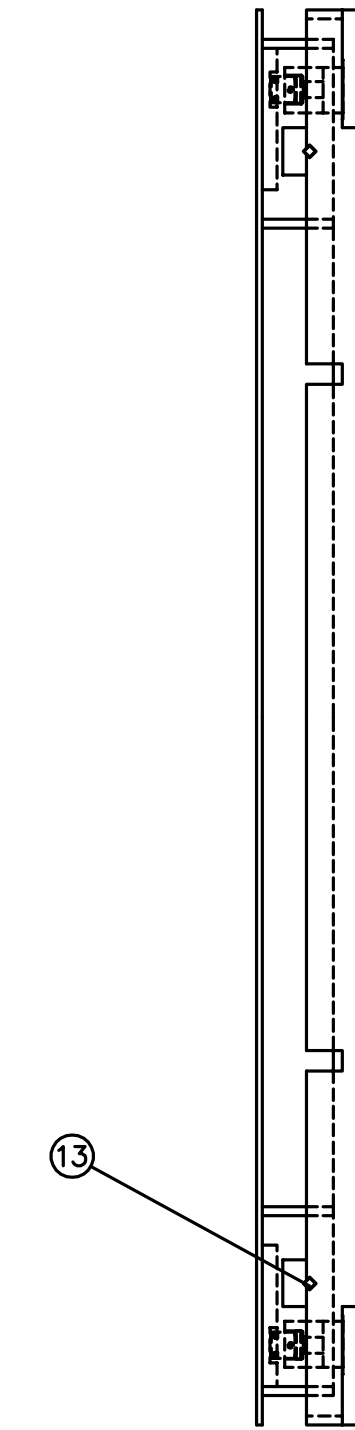
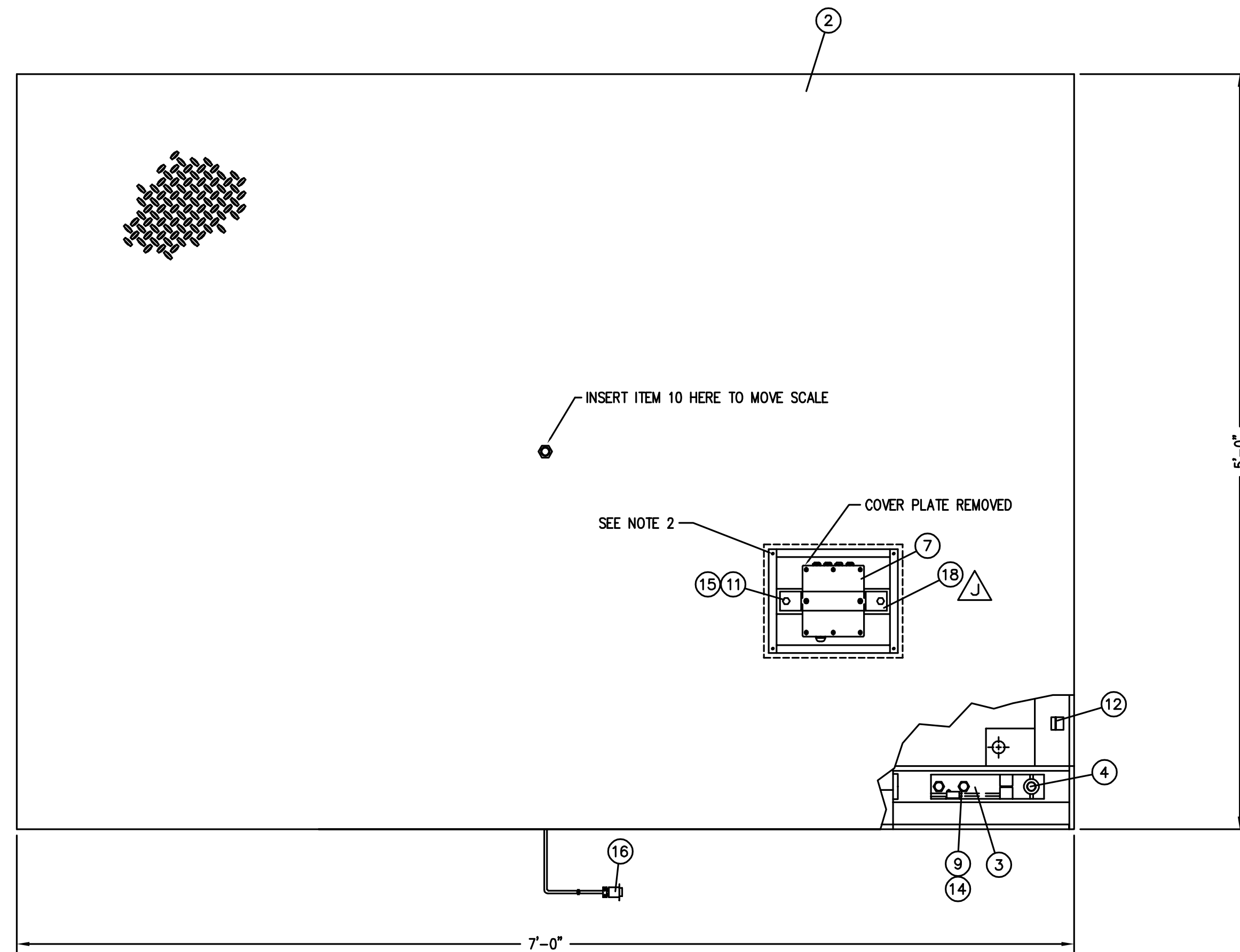
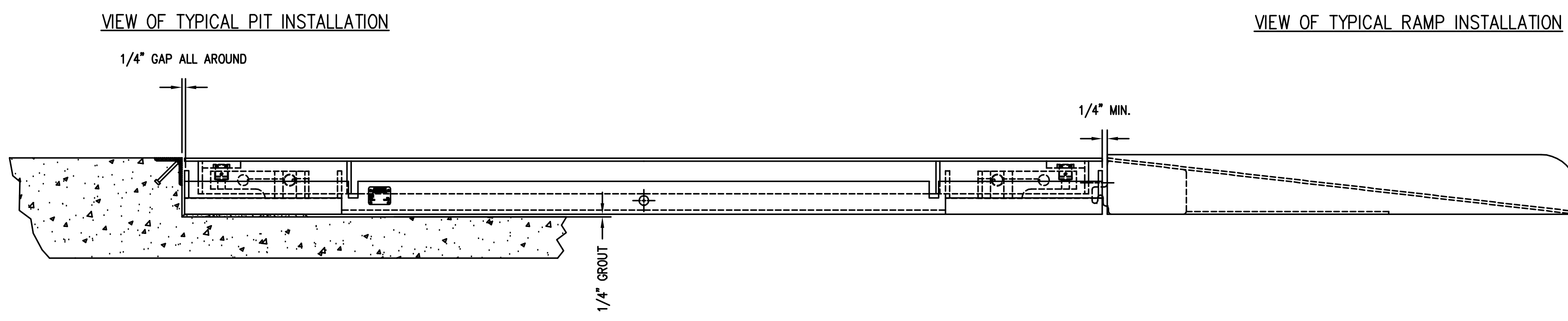


REVISION RECORD			
LTR	DESCRIPTION	DATE	BY
D	ITEM 3 WAS 2910-C039-0A SB10000SW	1/6/92	12548 CL
E	REDRAWN ON AUTOCAD, DELETED -1A THRU -5A ASSY'S. UPDATED DWG. AND BOM TO CURRENT PRODUCTION PRACTICE	10/10/98	15091 C.H.
F	ITEM 7, SHOW NEW STYLE J-BOX	4/25/97	15564 EMJ/SC
G	PIT PLAN WAS 1902-C012	1/2/98	15968 RN/GPL
H	DRAWING UPDATE	05-05 -99	20034 KDS/GPL
J	ADD ITEM 18 MOUNTING STRAP ROTATE J-BOX 90°	10/3/00	21089 JAT



- NOTES:
- REF. DRAWING 1905-B207-0A FOR LOCATION OF SERIAL TAG AND LOGO.
 - MATCH DRILL THESE HOLES THRU ITEM 6 AND THEN TAP 10-24 UNC 2B THE HOLES IN THE WEIGHBRIDGE. SECURE ITEM 6 WITH ITEMS 5.
 - SCALE MUST BE INSTALLED ON A SMOOTH AND LEVEL SURFACE.
 - REMOVE ITEM 6 FOR ACCESS TO JUNCTION BOX FOR CALIBRATION PURPOSES.
 - FOR PIT PLAN REF. DWG. 1922-C072-0A.
 - ITEM 13 MUST NOT BE IN CONTACT WITH THE WEIGHBRIDGE WHILE SCALE IS IN OPERATION.
 - FOR ELECTRICAL INTERCONNECTION REF. DWG. 3502-B208-02.
 - REMOVE ITEM 13 WHEN SCALE IS TO BE INSTALLED IN A PIT.
 - RAMP SLOPE IS APPROX. 6.5°.

QTY.	QTY.	QTY.	ITEM	PART/DWG. NUMBER	DESCRIPTION	MATERIAL OR SOURCE	WT. EACH	
1	18		3502-B462-08	MOUNTING STRAP			0.3	
1	17		1905-B207-0A	I.D. MARKING			-	
1	16		3502-B396-0A	L.C. CABLE	9 PIN "D" CONN.		1.0	
2	15		6024-0039	LOCK WASHER	1/4"		0.01	
8	14		6007-0312	HEX HEAD BOLT	3/4-10 UNF 2A x 4" GR 5		0.18	
4	13		6007-3000	SO. HEAD SCREW	1/2-13 UNC x 2" DOG POINT		0.16	
12	12		6610-5007	CABLE CLIP			0.01	
2	11		6007-0007	HEX HEAD BOLT	1/4-20 x 3/8"		0.1	
1	10		418R1047	EYE BOLT	5/8"		.8	
8	9		6024-0054	LOCK WASHER	3/4" ZINK PLATED		0.07	
8	8		6020-0012	SPRING PIN	1/8" DIA. x 1/2"		.01	
1	7		3502-C208-0A	JUNCTION BOX			2.5	
1	6		1905-B103-08	COVER PLATE			7.5	
4	5		6021-1201	FLAT HEAD SCW.	10-24 x 3/4" PHILLIPS DR.		0.15	
4	4		3500-B067-08	ROCKER WASHER			0.4	
4	3		SB-10000S	LOAD CELL	2910-C021-0A		10.0	
1	2		1922-D026-0A	WEIGHBRIDGE ASSY.			878.2	
1	1		1922-C045-0A	BASE ASSY.			291.0	
		1225.6	WT.	PARTS/MATERIAL LIST				



UNLESS OTHERWISE SPECIFIED TOLERANCES ON DIMENSIONS ARE:
 ANGLES ± 1/2°
 INTEGERS/FRACTIONS ± 1/16 IN.
 DECIMALS (.X) ± .03 IN.
 DECIMALS (.XX) ± .01 IN.
 DECIMALS (.XXX) ± .005 IN.
 NOTE: WHOLE NUMBERS MUST BE WRITTEN XX.000 TO INVOKE DECIMAL TOLERANCES.

THIS DRAWING IS THE PROPERTY OF THE CARDINAL SCALE MFG. CO. AND SHALL NOT BE USED NOR REPRODUCED EITHER WHOLLY OR IN PART EXCEPT WITH WRITTEN AUTHORIZATION. ALL RIGHTS OF DESIGN OR INVENTION ARE RESERVED.

Cardinal
 Cardinal Scale Manufacturing Co.
 VERNON, CT, USA 06069

CARDINAL DETECTO FULLER WEIGHING SYSTEMS

TITLE: FINAL ASSY: FH-2075-II

SCALE 1 = 8 DO NOT SCALE DRAWING NEXT ASSEMBLY

DR. C. LUSH DATE 3/30/87

CH. DATE

MODEL FH-2075-II SHEET 1 OF 1 DWG. NO. 1922-D029-0A REV. J