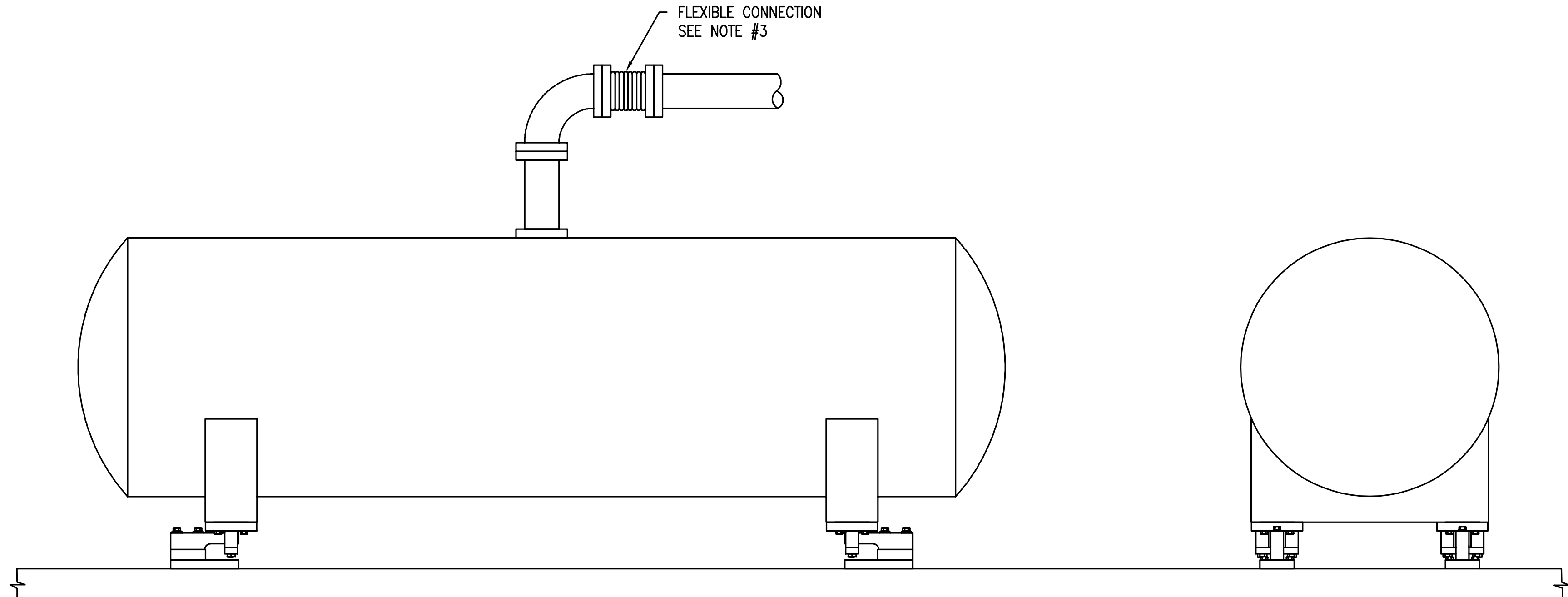



REVISION RECORD			
LTR	DESCRIPTION	DATE	BY
A	REDRAWN ON AUTOCAD WITH REVISED MODEL NUMBERS BLOCK	3/21/91	11735 JAT



GENERAL NOTES:

1. TYPICAL INSTALLATION AS SHOWN, FOR REFERENCE ONLY. CONSULT FACTORY FOR SPECIFIC INSTALLATIONS.
2. THE PURCHASERS OF FLOOR STAND TANK SCALES ARE ADVISED TO INSTALL SAFETY STAY RODS. CARDINAL SCALE MANUFACTURING CO. WILL NOT BE RESPONSIBLE FOR THE STABILITY OF THE TANK.
3. IT IS RECOMMENDED THAT ALL PIPE CONNECTIONS, TO TANK, BE FLEXIBLE. (CONSULT FACTORY FOR PIPING FLEXIBILITY.)
4. PROVIDE FIRM, LEVEL SURFACE FOR LOAD CELL MOUNTING. LOAD CELLS MAY BE ROTATED TO SUIT CUSTOMER'S SPECIFIC INSTALLATION.
5. FOR APPLICATIONS WHICH REQUIRE PERIODIC DEAD WEIGHT CALIBRATIONS, WEIGH LIFTING LUGS ARE TO BE PROVIDED ON TANK.
6. CONSULT FACTORY FOR SPECIAL APPLICATIONS AND/OR INSTALLATIONS.
7. REFERENCE DRAWING 3500-B092-0A SHEAR BEAM CELL STAND DIMENSIONAL OUTLINE DRAWING.

MAT'L.	STAND MODEL	CELL	
		CAPACITY	MODEL
STAINLESS STEEL	SBCSS-NC20	10,000 lb	SB10000SW
		20,000 lb	SB20000SW
	SBCSS-NC5	2,500 lb	SB2500SW
		5,000 lb	SB5000SW
MILD STEEL	SBCS-NC20	10,000 lb	SB10000SW
		20,000 lb	SB20000SW
	SBCS-NC5	2,500 lb	SB2500SW
		5,000 lb	SB5000SW

QTY.	QTY.	QTY.	ITEM	PART/DWG. NUMBER	DESCRIPTION	MATERIAL OR SOURCE	WT. EACH
			ASSY				
			WT.	PARTS/MATERIAL LIST			
UNLESS OTHERWISE SPECIFIED TOLERANCE ON DIMENSIONS ARE: ANGLES ± 1/2° INTEGERS/FRACTIONS ± 1/16 IN. DECIMALS (.X) ± .03 IN. DECIMALS (.XX) ± .01 IN. DECIMALS (.XXX) ± .005 IN. NOTE: WHOLE NUMBERS MUST BE WRITTEN XX.000 TO INVOKE DECIMAL TOLERANCES.				 CARDINAL DETECTO FULLER WEIGHING SYSTEMS TITLE TYPICAL HORIZONTAL TANK APPLICATION FOR SHEAR BEAM LOAD CELLS SCALE 1 = 5 DO NOT SCALE DRAWING NEXT ASSEMBLY CUSTOMER DRAWING DR. R.ABAUER DATE 12/20/85 CH. G.G. DATE MODEL SHEET 1 OF 1 DWG. NO. 3500-C034-0A REV. A			
THIS DRAWING IS THE PROPERTY OF THE CARDINAL SCALE MFG. CO. AND SHALL NOT BE USED NOR REPRODUCED EITHER WHOLLY OR IN PART EXCEPT WITH WRITTEN AUTHORIZATION. ALL RIGHTS OF DESIGN OR INVENTION ARE RESERVED.							