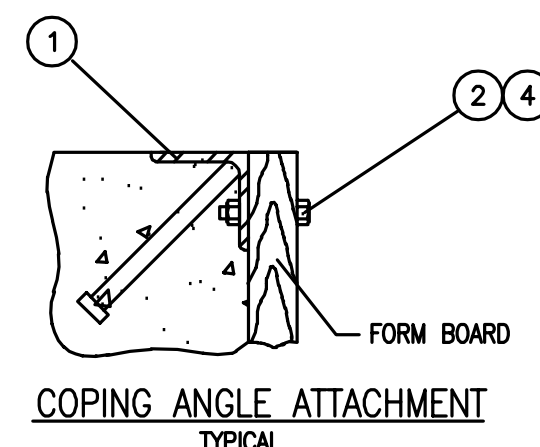
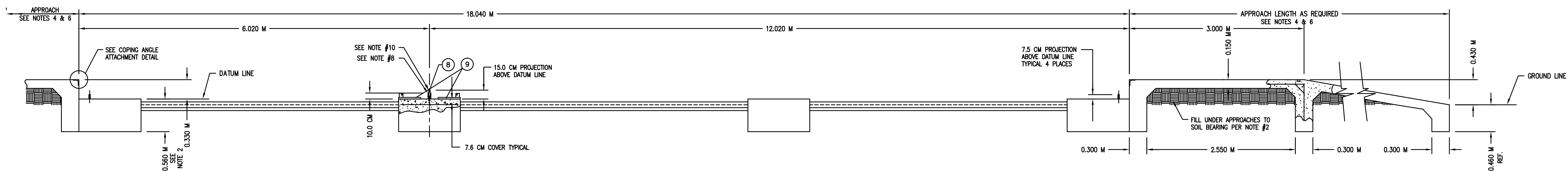
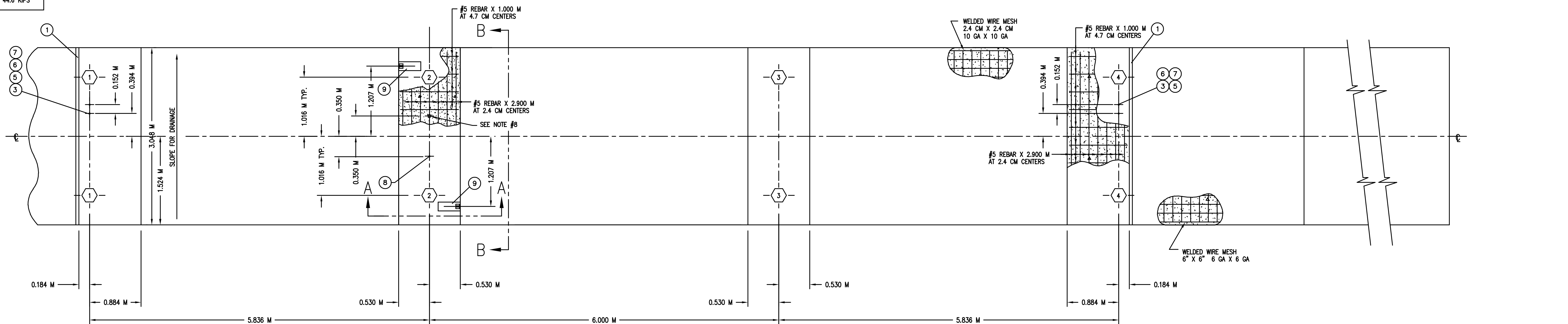


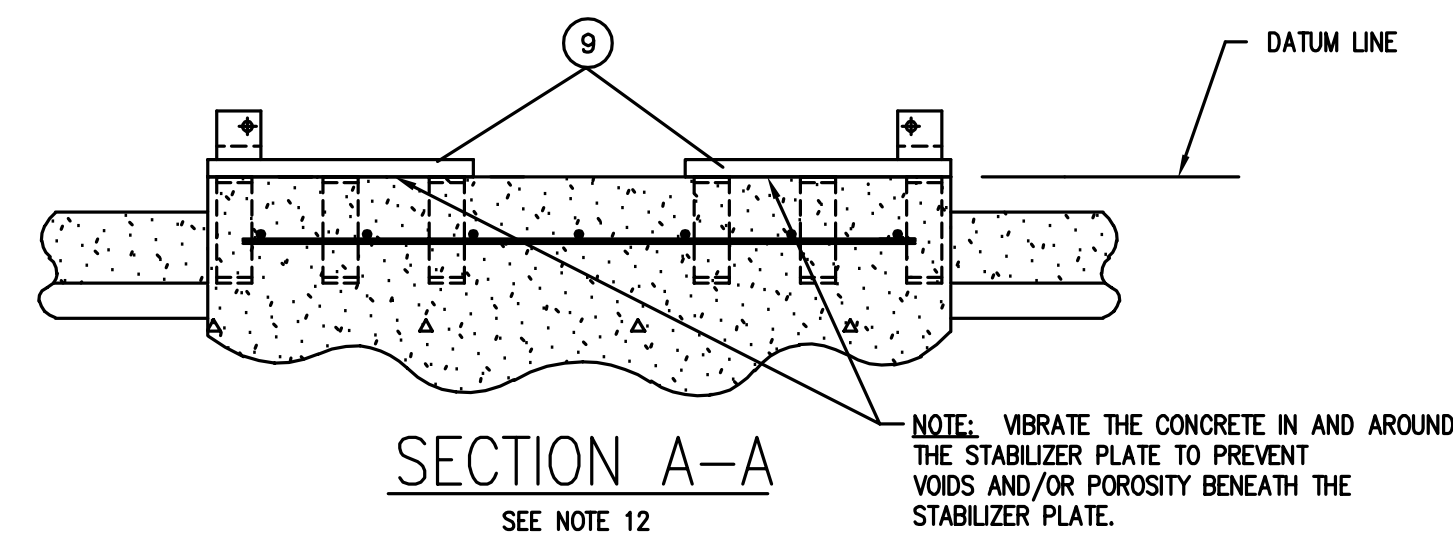
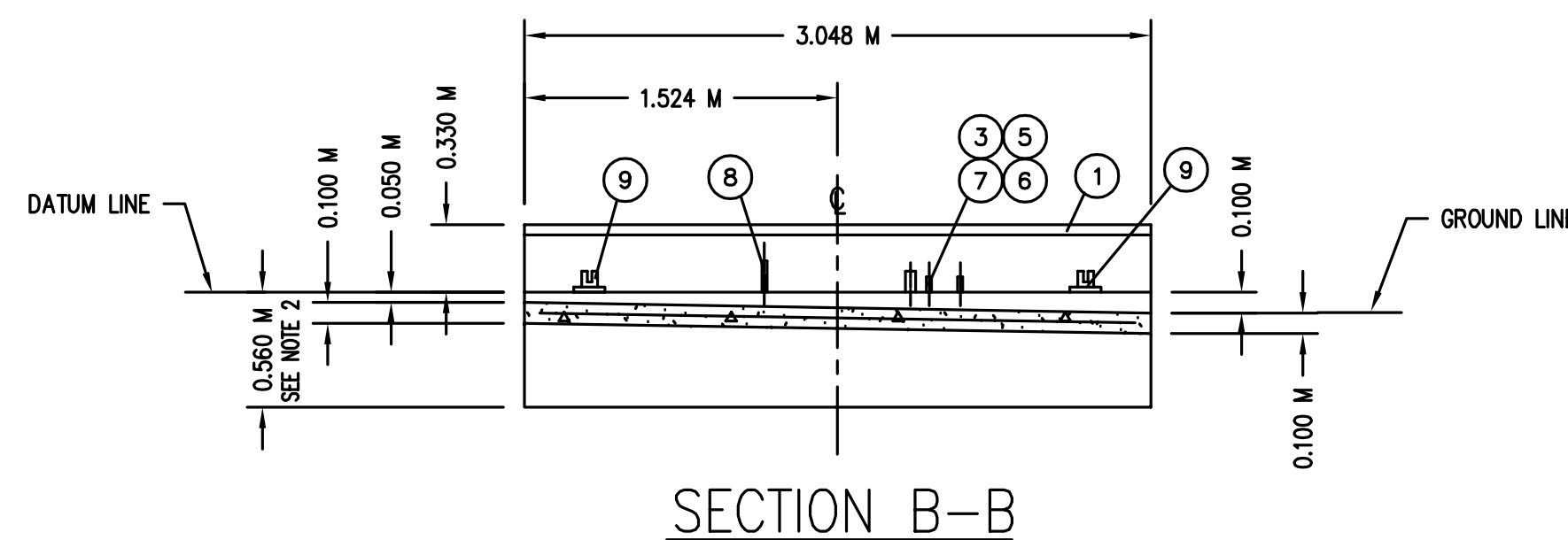
PIER LOADINGS AT 40 METRIC TON CLC	
PIER	LOADING
1	44.6 KIPS
2	49.2 KIPS
3	49.2 KIPS
4	44.6 KIPS

REVISION RECORD			
LTR	DESCRIPTION	DATE	BY
A	RELEASED	10/10/02	JAT



NOTES:

- ITEM 9 IS FURNISHED BY CARDINAL SCALE MFG. CO.
- THE SCALE FOUNDATION AS SHOWN IS SUFFICIENT FOR FIRM SOIL AND GOOD CONCRETE. THE MINIMUM SOIL BEARING SHALL BE 1361 KG PER SQUARE FOOT AND THE MINIMUM CONCRETE STRENGTH SHALL BE 1361 KG PER SQUARE INCH, 28 DAY. FOR UNUSUAL SOIL CONDITIONS OR DEEP FROST PENETRATION, ALTER THE FOUNDATION AS REQUIRED. THE FOOTING SHALL BE BELOW THE FROST LINE.
- CARDINAL SCALE MFG. CO. SHALL NOT BE RESPONSIBLE FOR THE STABILITY OF THE FOUNDATION.
- THE FOUNDATION CONTRACTOR SHALL CONTACT THE LOCAL WEIGHT AND MEASURES DIVISION FOR LOCAL FOUNDATION REQUIREMENTS.
- WORK FROM THE CENTERLINES WHEN ERECTING FORMS AND SETTING BOLTS.
- ON THE APPROACH END OR ENDS OF A VEHICLE SCALE INSTALLED IN ANY ONE LOCATION FOR A PERIOD OF SIX MONTHS OR MORE, THERE SHALL BE A STRAIGHT APPROACH AS FOLLOWS:
 - AT LEAST THE WIDTH OF THE PLATFORM AND
 - AT LEAST ONE-HALF THE LENGTH OF THE PLATFORM BUT NOT REQUIRED TO BE MORE THAN 12.0 M, AND
 - NOT LESS THAN 3.0 M OF ANY APPROACH ADJACENT TO THE PLATFORM SHALL BE CONSTRUCTED OF CONCRETE OR SIMILAR DURABLE MATERIAL TO INSURE THAT THIS PORTION REMAINS SMOOTH AND LEVEL AND IN THE SAME PLANE AS THE PLATFORM. HOWEVER, GRATING OF SUFFICIENT STRENGTH TO WITHSTAND ALL LOADS MAY BE INSTALLED IN THIS PORTION; AND FURTHER WHERE DEEMED NECESSARY FOR DRAINAGE PURPOSES, THE REMAINING PORTION OF THE APPROACH MAY SLOPE SLIGHTLY.
- EXCAVATION AND CONCRETE REQUIRED FOR SCALE FOUNDATION AS SHOWN: MAIN PIERS: 6.0 CU. METERS EXCAVATION; 7.3 CU. METERS CONCRETE SLAB FLOOR: 3.2 CU. METERS EXCAVATION; 4.2 CU. METERS CONCRETE APPROACHES (3.0 METERS EACH END): 1.7 CU. METERS EXCAVATION; 3.9 CU. METERS CONCRETE.
- TRANSMISSION CABLE FROM LOAD CELL TO INDICATOR SHALL BE IN 2.5 CM MINIMUM SIZE CONDUIT AT LEAST 9.5 CM FROM THE CLOSEST ELECTRICAL LINE. THEY MAY CROSS AT 90° ONLY.
- CAUTION: DO NOT WELD ON STRUCTURE WHILE ELECTRONIC LOAD CELLS ARE IN THE SYSTEM.
- REFER TO INSTALLATION MANUAL FOR PROPER ELECTRICAL GROUNDING SPECIFICATIONS.
- REINFORCING ROD AND WELDED WIRE MESH ARE NOT FURNISHED BY CARDINAL SCALE MFG. CO. THE REBAR SHALL CONFORM TO ASTM A615, GRADE 60. THE WELDED WIRE MESH SHALL CONFORM TO ASTM A-185.
- ITEM 9 SHALL BE LEVEL IN ALL DIRECTIONS AFTER THE FOUNDATION HAS BEEN COMPLETED.



QTY.	QTY.	QTY.	ITEM	PART/DWG. NUMBER	DESCRIPTION	MATERIAL OR SOURCE	WT. EACH
	2	9	0147-C420-0A		STABILIZER PLATE		18.3
	1	8	3502-B006-57		GROUNDING KIT	OPTIONAL EQUIPMENT	11.7
	4	7	BY OTHERS		LOCK WASHER	1" DIA	
	4	6	BY OTHERS		FLAT WASHER	1" DIA	
	4	5	BY OTHERS		HEX NUT	1"-8 UNC-2B	
	6	4	BY OTHERS		HEX NUT	3/8"-16 UNC-2B	
	4	3	BY OTHERS		HEX HEAD BOLT	1"-8 UNC-2A X 35.5 CM	
	6	2	BY OTHERS		HEX HEAD BOLT	3/8"-16 UNC-2A X 3.8 CM	
	2	1	BY OTHERS		COPING ANGLE	3.048 M LONG	

QTY.	QTY.	QTY.	ITEM	PART/DWG. NUMBER	DESCRIPTION	MATERIAL OR SOURCE	WT. EACH
		36.6 KG	WT.		PARTS/MATERIAL LIST		

UNLESS OTHERWISE SPECIFIED TOLERANCE ON DIMENSIONS ARE: ANGLES ± 1/2° INTEGERS/FRACTIONS ± 1.5 MM				 CARDINAL DETECTO FULLER WEIGHING SYSTEMS	
TITLE				FOUNDATION PLAN (18 M X 3.048 M)	
SCALE	N.T.S.	DO NOT SCALE DRAWING	DATE	10/9/02	0108-D023-0A
DR. TARNOWIECKY	DATE	10/9/02	ASSEMBLY		
CH. M. L. SMITH	DATE	10/10/02	MODEL		
8018PRC-1 METRIC	SHEET 1 OF 1	DWG. NO.	0108-D024-0A	REV.	A