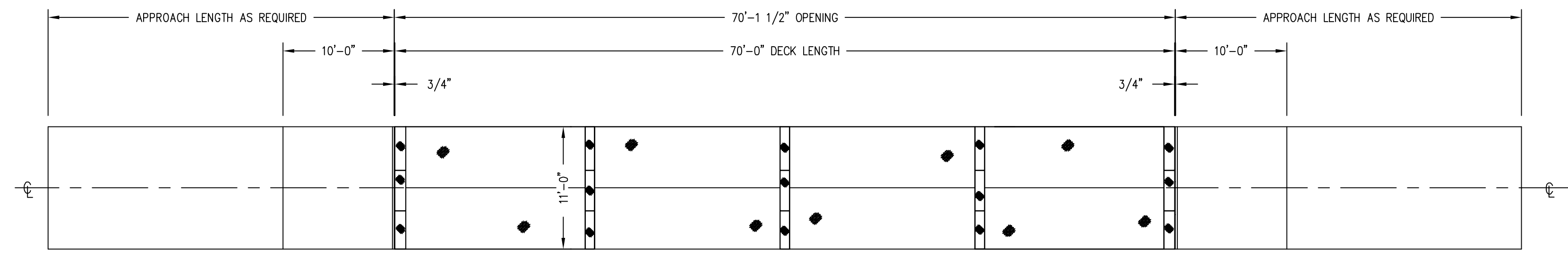
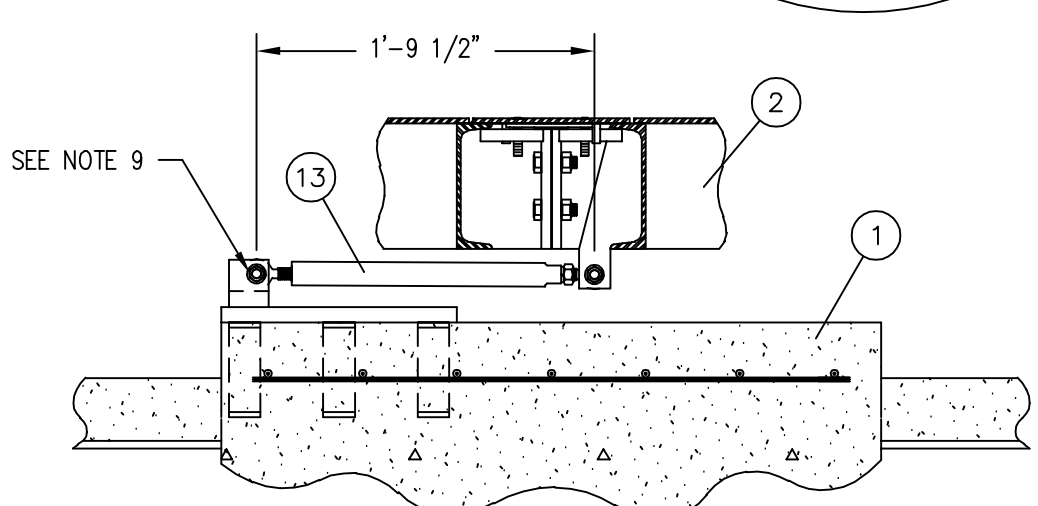
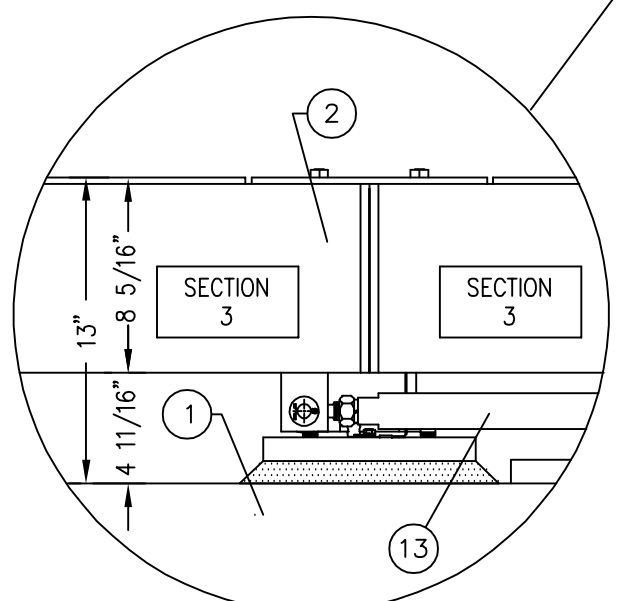
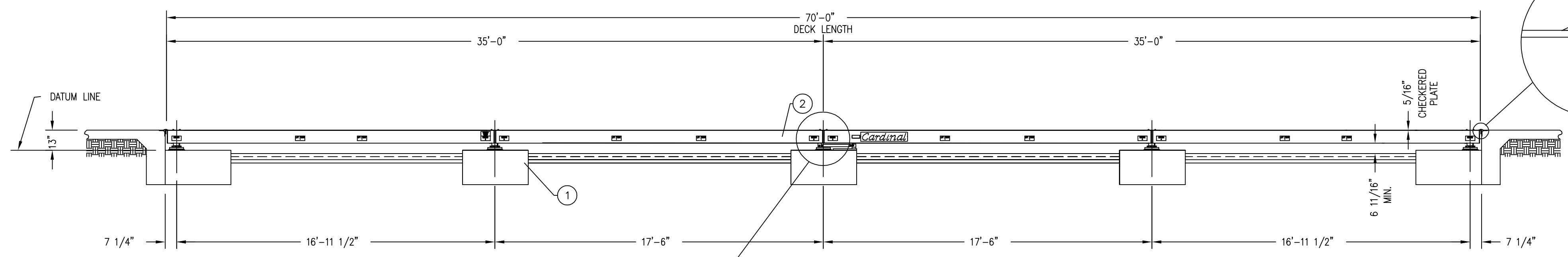
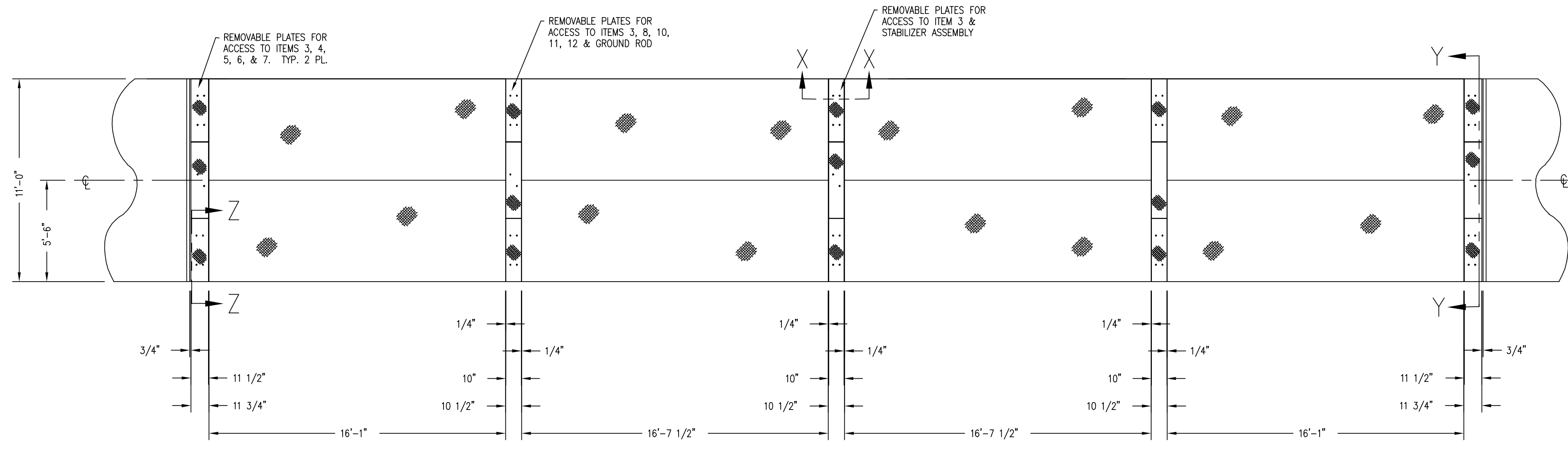


IMPORTANT! If your scale is equipped with access ways, such as manholes, it is the users responsibility to provide proper protection such as barriers, during the time they are open or removed.

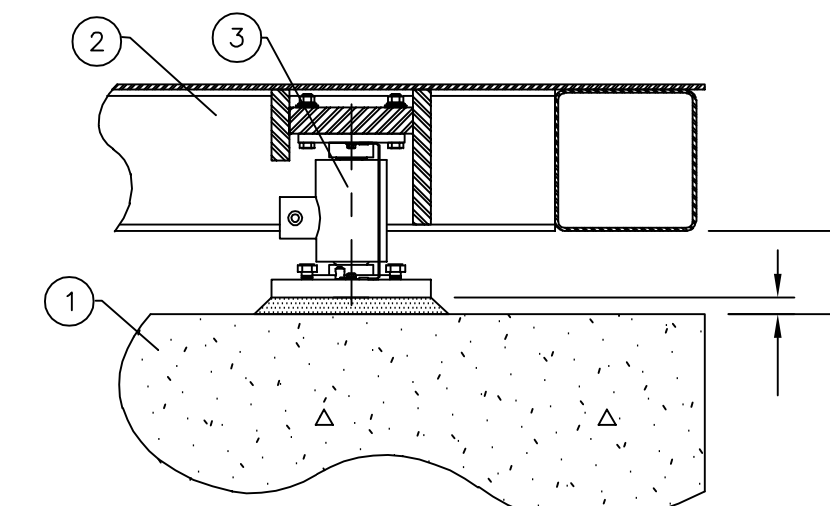
REVISION RECORD			
LTR	DESCRIPTION	DATE	BY
F	ITEM 4 WAS 0145-B075-08 5/4" LG. SECT Y-Y 1'-6" DIM WAS 1'-8" & 3'-8 3/8" DIM WAS 3'-10 3/8"; SHOW 3 PC. ACCESS PLATES.	5/20/95	JAT RTB
G	ITEM 8 WAS 3502-D177-1A	9-14-94	14066 C.H. SC
H	UPDATED APPEARANCE OF DWG TO SHOW STABILIZER RATHER THAN FLEXURE; REVISED LOAD CELL MOUNTS; NEW NOTE 9 AND ADDED NOTE 11; ADD ITEM 13.	6/7/95	14296 JAT/ONM
J	CHECKER PLATE CHANGED FROM 1/4" TO 5/16" THICK & DIMENSIONS REVISED ACCORDINGLY GROUT CHANGED FROM 1" TO 1 1/2" THICK ITEM 9 QTY WAS 1 NOTE 3 MAX LIFT WAS 6,200# NOTE 8 WAS 6 3/4" MIN CLEARANCE	4/3/00	20668 JAT



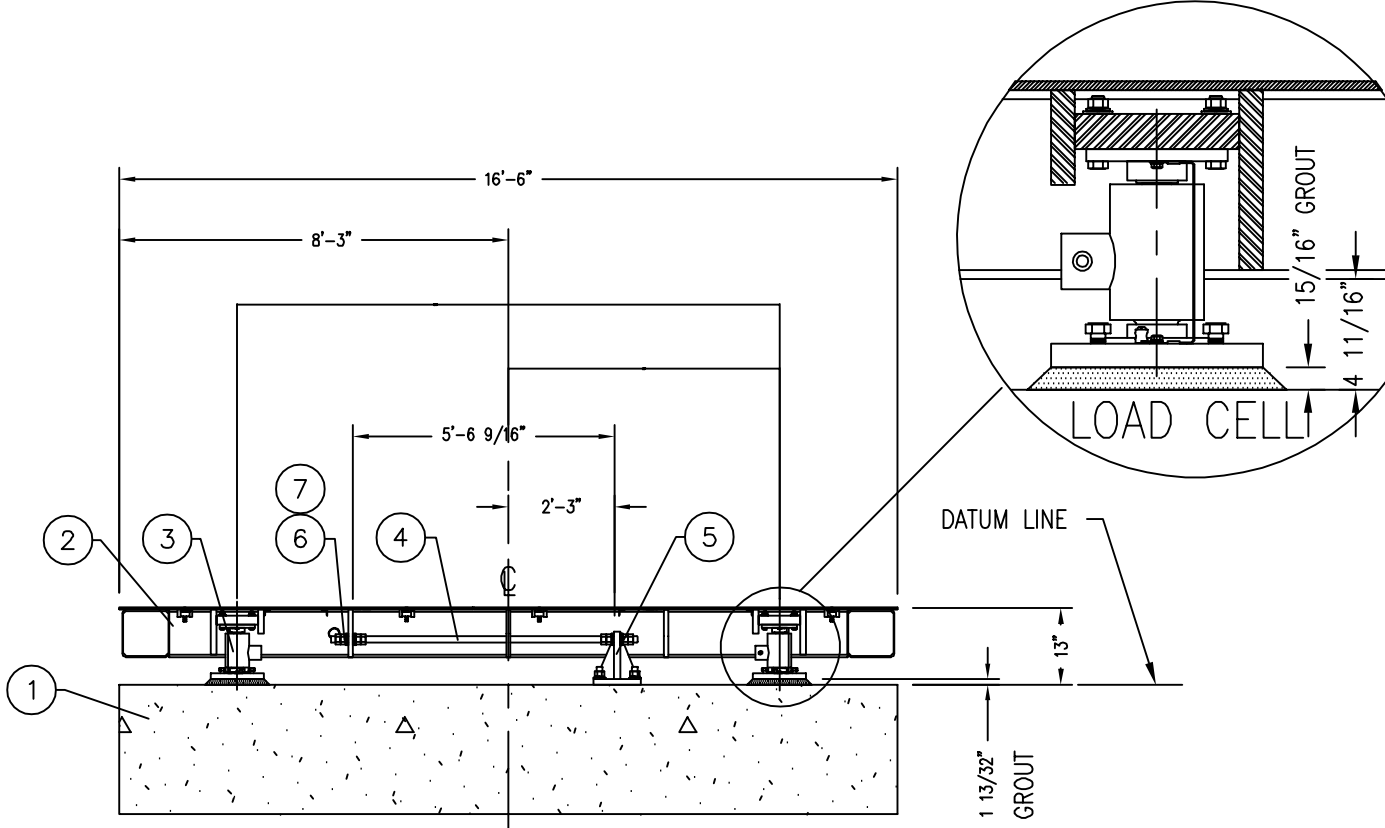
PLAN VIEW GENERAL ARRANGEMENT



SECTION X-X



SECTION Z-Z



SECTION Y-Y

NOTES:

- CAUTION: DO NOT WELD ON THE SCALE WHILE THE LOAD CELLS ARE IN PLACE.
- REFER TO THE INSTALLATION MANUAL FOR PROPER ELECTRICAL GROUNDING SPECIFICATIONS.
- THE WEIGHBRIDGE IS SUPPLIED IN FOUR MODULES. MAXIMUM LIFT PER MODULE IS 6,300 POUNDS.
- ADJUST THE LOAD CELL ASSEMBLIES TO THE PROPER ELEVATION AND GROUT IN PLACE. GROUT SHALL BE OF AN APPROVED NON-SHRINKING EPOXY TYPE ONLY. REF. U.S. GROUT CORP., 5-STAR; Sika CHEMICAL; REXNORD; OR EQUAL.
- ALL LATERAL STABILIZERS SHALL BE LEVEL AND TRUE TO PLANE BOTH HORIZONTALLY AND VERTICALLY AFTER THE SCALE HAS BEEN COMPLETELY SET.
- THE WEIGHT INDICATOR IS SHOWN ON A SEPARATE DRAWING.
- SAFETY BARRIERS ARE A USER/OWNER RESPONSIBILITY TO PREVENT VEHICLES FROM RUNNING OFF THE SIDES OF THE SCALE. FOR THE SAFETY OF VEHICLES USING THIS SCALE, SIDE RAILS AND/OR PROTECTIVE POSTS ARE AVAILABLE AS OPTIONAL EQUIPMENT.
- THE 6 11/16" MINIMUM CLEARANCE UNDER THE SCALE MUST BE MAINTAINED THE FULL LENGTH OF THE SCALE EXCEPT AT THE LOAD CELL PIER AREAS.
- REMOVE COTTER PINS, WASHER AND CLEVIS PINS FROM ROD ENDS. POSITION ONE ROD END INTO CLEVIS ON STABILIZER PLATE AND REPLACE ONE CLEVIS PIN, WASHER AND COTTER PIN. THEN POSITION THE WEIGHBRIDGE IN PLACE. LOOSEN HEX NUT ON THE OTHER END OF THE STABILIZER AND ADJUST THE ROD END TO THE PROPER LENGTH. THEN POSITION THE ROD END INTO THE STABILIZER PLATE AND REPLACE THE CLEVIS PIN, WASHER AND COTTER PIN. TIGHTEN THE HEX NUT IN PLACE. REPEAT FOR THE OTHER SIDE. THERE SHALL BE NO MOVEMENT IN THE SCALE AFTER THE STABILIZERS HAVE BEEN PROPERLY ADJUSTED.
- CARDINAL SCALE MFG. CO. RECOMMENDS THAT THE CUSTOMER INSTALL PROTECTIVE CONDUIT/COVER FOR THE LOAD CELL CABLES WHENEVER THE CONDITION IS PRESENT THAT CAN RESULT IN DAMAGE OR ABRASION TO THE LOAD CELL CABLES.
- WRAP EXCESS LOAD CELL CABLES AROUND CABLE BRACKETS. THE CABLE BRACKETS ARE LOCATED UNDER THE ACCESS COVERS.

MODEL 13570PRC-1
 NOMINAL CAPACITY 135 TONS
 U.S.—CONCENTRATED LOAD CAPACITY 40 TONS
 CANADA—SECTIONAL CAPACITY 50 TONS
 CANADA—S.W.A. NO. —74137
 SERIAL NUMBER "SALES ORDER NUMBER"

NOMINAL CAPACITY IS THE GROSS CAPACITY AS ASSIGNED BY THE MANUFACTURER.

CONCENTRATED LOAD CAPACITY (CLO) AS ASSIGNED BY THE MANUFACTURER, IS THE LOAD WHICH CAN BE PLACED ANYWHERE ON THE PLATFORM IN THE PRESCRIBED TEST PATTERN.

SECTIONAL CAPACITY IS THE MAXIMUM LOADING FOR EACH PAIR OF LOAD CELLS AS ADJACENT PLATFORMS (SPANS) ARE LOADED.

QTY.	QTY.	QTY.	ITEM	PART/DWG. NUMBER	DESCRIPTION	MATERIAL OR SOURCE	WT. EACH
	2	13	0147-B422-0A		STABILIZER ASSEMBLY		10.9
	4	12	6024-0039		LOCK WASHER	1/4"	0.01
	4	11	6013-0045		HEX NUT	1/4"-20 UNC-2B	0.01
	4	10	6007-0011		HEX HEAD BOLT	1/4"-20 UNC-2A X 1"	0.01
	22	FT	6540-0002		RUBBER TYP CONCRETE STRIP INTERCONNECTION ASSEMBLY		0.88
	1	8	3502-0364-0A		INTERCONNECTION ASSEMBLY		39.8
	16	7	6013-0165		HEX NUTS	1"-8 UNC-2B	0.29
	8	6	0145-B011-0A		SPHERICAL WASHER		0.37
	2	5	0145-C008-0A		LATERAL STABILIZER BRACKETS--TALL		22.1
	2	4	0147-B162-08		LATERAL STABILIZER	52"	11.6
	10	3	2970-C086-0A		LOAD CELL SUPPORT ASSEMBLY	SEE INSTALLATION MANUAL	47.6
	1	2	0147-D100-0A		WEIGHBRIDGE SCHEMATIC		24770
	1	1	0147-D098-0A		FOUNDATION PLAN		182.9

QTY.	QTY.	QTY.	ITEM	PART/DWG. NUMBER	DESCRIPTION	MATERIAL OR SOURCE	WT. EACH
		25585	WT.		PARTS/MATERIAL LIST		

UNLESS OTHERWISE SPECIFIED TOLERANCE ON DIMENSIONS ARE:
 ANGLES ± 1/2"
 INTEGERS/FRACTIONS ± 1/16 IN.
 DECIMALS (.X) ± .03 IN.
 DECIMALS (.XX) ± .01 IN.
 DECIMALS (.XXX) ± .005 IN.
 NOTE: WHOLE NUMBERS MUST BE WRITTEN XX.000 TO INVOKE DECIMAL TOLERANCES.

THIS DRAWING IS THE PROPERTY OF THE CARDINAL SCALE MFG. CO. AND SHALL NOT BE USED NOR REPRODUCED EITHER WHOLLY OR IN PART EXCEPT WITH WRITTEN AUTHORIZATION. ALL RIGHTS OF DESIGN OR INVENTION ARE RESERVED.

Cardinal
 Cardinal Scale Manufacturing Co.
 FULLER WEIGHING SYSTEMS

TITLE FINAL ASSEMBLY: FULL ELECTRONIC; HIPLESS MOTOR TRUCK SCALE; 5-SECT; 135 TON CAP; 70' X 11' X 5/16" CHECKERED DECK
 SCALE 1/4" = 12" DO NOT SCALE DRAWING NEXT ASSEMBLY

DR. JAT DATE 6/28/91
 CH. RTB DATE 7/2/91 *0147-D097-0A*
 MODEL 11" WIDE SHEET 1 OF 1 DWG. NO. 0147-D097-0A REV. J

PAINT = 3880 SQ. FT. (40% O.S. INCLUDED)