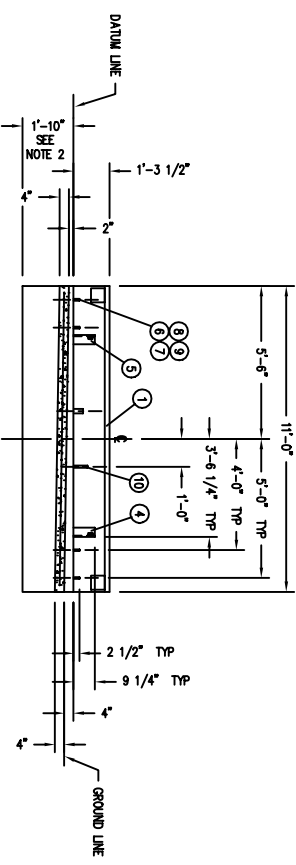
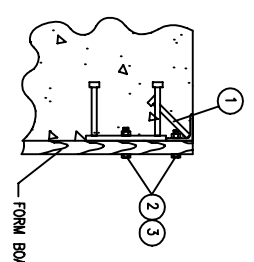
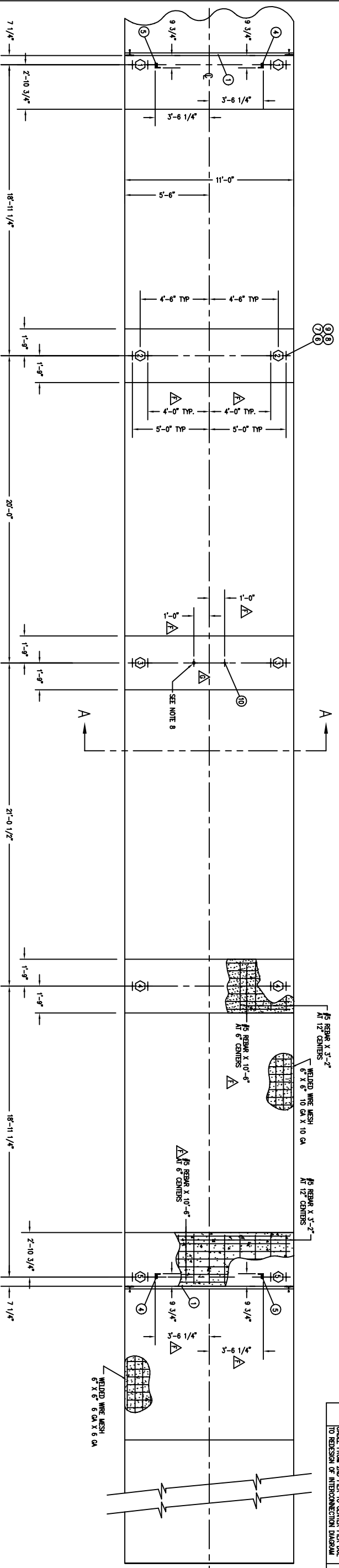


PER LOADINGS AT 30' ON C/D	PER LOADINGS AT 30' ON C/D
1	35.0 MPRS
2	41.0 MPRS
3	41.0 MPRS
4	41.0 MPRS
5	35.0 MPRS



- NOTES:**
- ITEMS 1 THRU 10 ARE FURNISHED BY CAROWAL SCALE WFG. CO.
 - THE SCALE FOUNDATION AS SHOWN IS SUFFICIENT FOR FIRM SOIL AND GOOD FOOTING. THE MINIMUM SOIL BEARING SHALL BE 3,000 POUNDS PER SQUARE FOOT. THE MINIMUM CONCRETE STRENGTH SHALL BE 3,000 POUNDS PER SQUARE FOOT. THE MINIMUM CONCRETE STRENGTH SHALL BE 3,000 POUNDS PER SQUARE FOOT. PENETRATION ALTER THE FOUNDATION AS REQUIRED. THE FOOTING SHALL BE BELOW THE FROST LINE.
 - CAROWAL SCALE WFG. CO. SHALL NOT BE RESPONSIBLE FOR THE STABILITY OF THE FOUNDATION.
 - THE FOUNDATION CONTRACTOR SHALL CONTACT THE STATE WEIGHT AND MEASURES DIVISION FOR THE FOUNDATION REQUIREMENTS.
 - WORK APPROXIMATE DIMENSIONS WHEN EXCAVATING, FORMING AND SETTING BOLT LOCATION FOR A PERIOD OF SIX MONTHS OR MORE, THERE SHALL BE A STRAIGHT APPROACH AS FOLLOWS:
 - AT LEAST ONE-HALF THE LENGTH OF THE PLATFORM AND NOT MORE THAN 10 FEET FROM THE END OF THE PLATFORM.
 - AT LEAST ONE-HALF THE LENGTH OF THE PLATFORM BUT NOT MORE THAN 10 FEET FROM THE END OF THE PLATFORM.
 - NOT LESS THAN 10 FEET FROM THE END OF THE PLATFORM.
 - EXCAVATION AND CONCRETE REQUIRED FOR SCALE FOUNDATION AS SHOWN: MAIN PIER: 10.7 CU. YDS. EXCAVATION; 13.1 CU. YDS. CONCRETE; 8.4 CU. YDS. EXCAVATION; 10.7 CU. YDS. CONCRETE; 8.4 CU. YDS. EXCAVATION; 10.7 CU. YDS. CONCRETE.
 - TRANSMISSION CABLE FROM LOAD CELL TO INDICATOR SHALL BE IN 1\"/>

QTY.	QTY.	ITEM	PART/DWG. NUMBER	DESCRIPTION	MATERIAL OR SOURCE	WT. EACH
1	10	3502-000-08		GROUNDING WRT		15.8
20	9	6024-005		WALLET RIM WASHER 7/8"		0.46
20	8	6024-005		LOCK WASHER 3/4"		0.12
20	7	6013-015		HEX NUT 3/4"-UNF-2B		0.12
20	6	6007-020		3/4"-UNF-2A X 10"		1.4
2	5	0103-0128-1A		CHECK STRIP		27.5
2	4	0103-0128-0A		WELDED WIRE MESH		1.4
14	3	6013-005		HEX NUT 3/8"-UNF-2B		0.01
14	2	6007-020		3/8"-UNF-2A X 1 1/2"		0.06
2	1	0103-8131-0A		FORM ASSEMBLY		35.2

UNLESS OTHERWISE SPECIFIED:

TOLERANCE ON DIMENSIONS: ± 1/16 IN. (± 1.59 MM)

INTegers/FRACTIONS: ± 1/8 IN. (± 3.18 MM)

DECIMALS (X): ± 0.005 IN. (± 0.127 MM)

DECIMALS (XXX): ± 0.005 IN. (± 0.127 MM)

NOTE: WHICH NUMBERS MUST BE REPRODUCED TO MATCH CHANGES TO THE DRAWING.

SCALE: 1" = 36"

DR. WLS DATE 10/29/98

CH. WLS DATE 9/20/98

MODEL 10080-EPR SHEET 1 OF 1

DWG. NO. 0103-D149-0A

REV. 6

REV.	DESCRIPTION	DATE	BY
A	RELEASED FOR PRODUCTION	9/29/98	16394
B	UPDATE APPEARANCE OF ITEMS 4 & 5 (REF. FOR #2049)	3/1/99	16623
C	RELOCATE CHECK STANDS	2/29/99	20436
D	REVISE PER LOADINGS	4/7/00	20757
E	CORRECT NOTE 7	1/16/01	21775
F	UPDATED FOUNDATION TO MATCH CHANGES TO THE LOAD CELL STANDS. CHECK STANDS MOVED IN 2 1/2" PERIOD SECTION A-A TO REFLECT CHANGES TO THE FOUNDATION. WELDED WIRE MESH BEAR CHANGED FROM 11'-6" TO 10'-6" ITEM 8 PART NO. WMS 6024-0018	9/2/01	21420
G	WELDED WIRE MESH BEAR CHANGED FROM 11'-6" TO 10'-6" ITEM 8 PART NO. WMS 6024-0018	1/17/02	21722