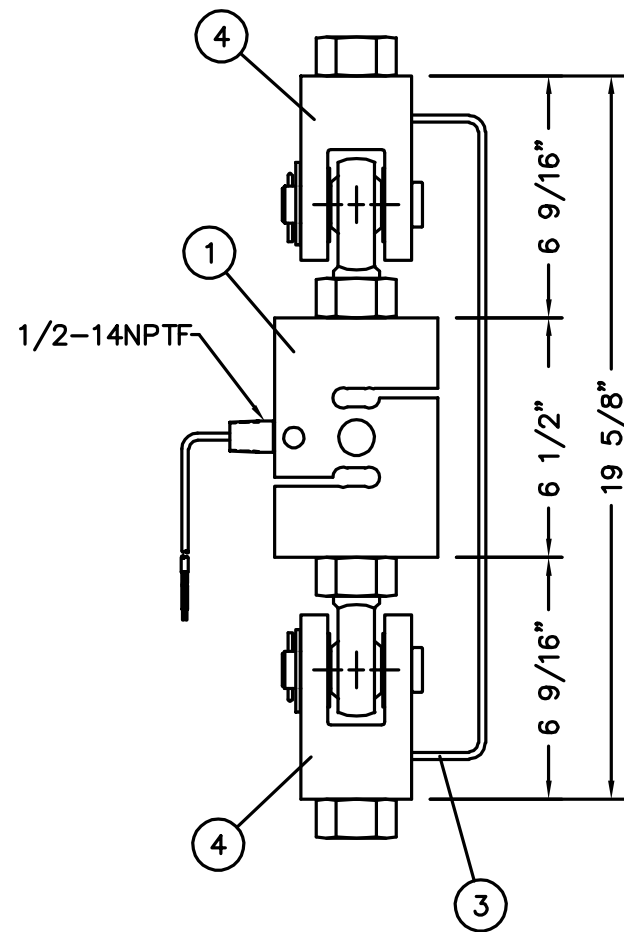


-2A  
ASSEMBLY



-3A  
ASSEMBLY

REVISION RECORD			
LTR	DESCRIPTION	DATE	BY

THE PURCHASER OF SUSPENDED SYSTEM SCALES SHOULD ARRANGE FOR SAFETY DEVICES AS RECOMENDED BY THE SCALE MANUFACTURER'S ASSOCIATION INC.

PER S/D	QTY.	QTY.	QTY.	QTY.	ITEM	PART/DWG. NUMBER	DESCRIPTION	MATERIAL OR SOURCE	WT. EACH
				5			THREADED ROD	1 1/4-7 UNC x LENGTH / S/D	PER S/D
2				4	3501-B130-1A		CLEVIS ASSY		18.51
1	1			3	6980-0035		WIRE, STRANDED COPPER, #10 AWG	TYPE THW, GREEN, 16'	0.10
	2			2	3501-B130-0A		CLEVIS ASSY		22.07
1	1			1	ZX 20000		LOAD CELL ASSEMBLY	20,000#	16.5
	-2A	-1A	-0A	ASSY					

PER S/D	QTY.	QTY.	QTY.	QTY.	WT.	PARTS/MATERIAL LIST			
60.74									

UNLESS OTHERWISE SPECIFIED  
TOLERANCE ON DIMENSIONS ARE:  
 ANGLES ± 1/2°  
 INTEGERS/FRACTIONS ± 1/16 IN.  
 DECIMALS (.X) ± .03 IN.  
 DECIMALS (.XX) ± .01 IN.  
 DECIMALS (.XXX) ± .005 IN.  
 NOTE: WHOLE NUMBERS MUST BE  
 WRITTEN XX.000 TO INVOKE  
 DECIMAL TOLERANCES.

THIS DRAWING IS THE PROPERTY  
 OF THE CARDINAL SCALE MFG. CO.  
 AND SHALL NOT BE USED NOR RE-  
 PRODUCED EITHER WHOLLY OR IN  
 PART EXCEPT WITH WRITTEN AU-  
 THORIZATION. ALL RIGHTS OF DE-  
 SIGN OR INVENTION ARE RESERVED.

**Cardinal**  
 Cardinal Scale Manufacturing Co.  
 WEBB CITY, MISSOURI · USA · 64870

CARDINAL  
 DETECTO  
 FULLER WEIGHING SYSTEMS

TITLE  
 TENSION LOAD CELL ASSEMBLY

SCALE 1 = 5      DO NOT SCALE DRAWING      NEXT ASSEMBLY

DR. K.A.      DATE 9-26-90  
 CH. CW      DATE 27 SEPT 90

MODEL 20,000# CAPACITY      SHEET 1 OF 1      DWG. NO. 3501-B135-0A      REV. C