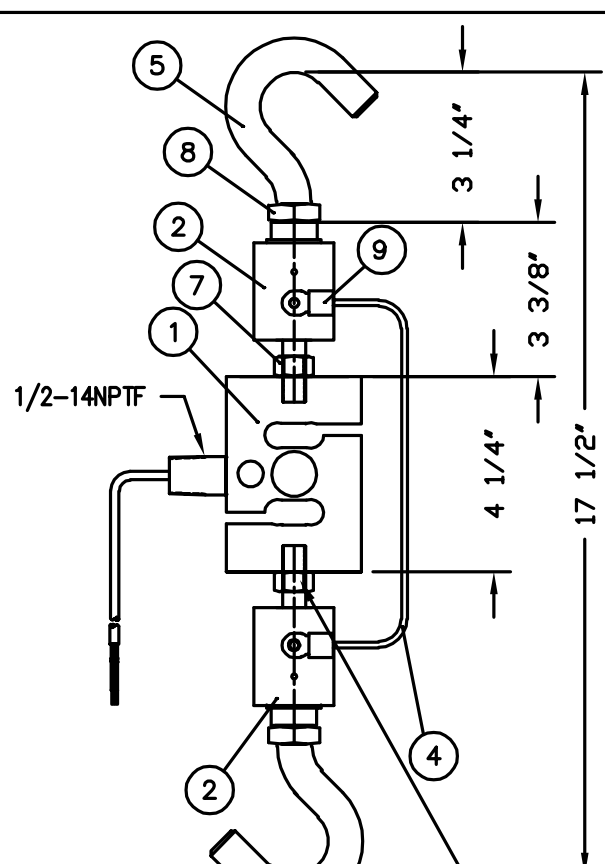
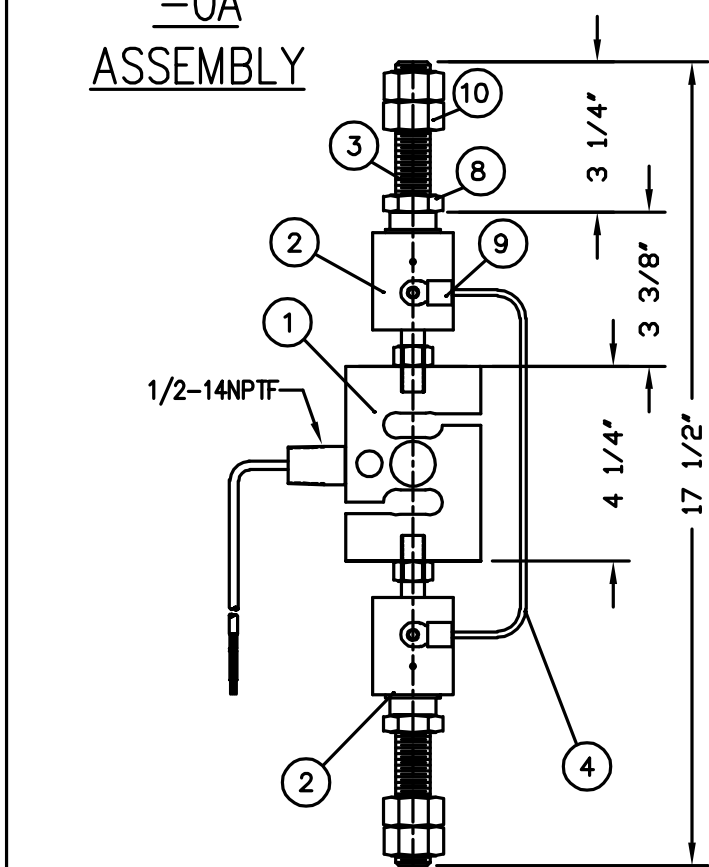


-0A ASSEMBLY

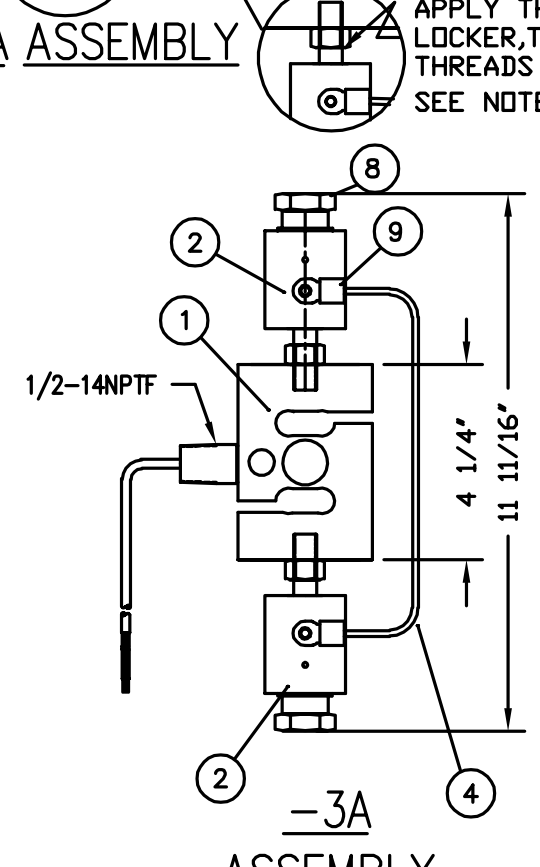


-1A ASSEMBLY

APPLY THREAD LOCKER TO BOLT THREADS ONLY. SEE NOTE 2



-2A ASSEMBLY



-3A ASSEMBLY

NOTES:

1. LOAD CELL ASSEMBLIES USING "J" BOLTS HAVE 200% ULTIMATE OVERLOAD RATING. OTHER ASSEMBLIES HAVE 300% OVERLOAD RATING.
2. TO ASSEMBLE, APPLY SMALL AMOUNT OF THREAD LOCKER ONTO BASE OF THREADED BOLT ITEM 2. ATTACH ITEM 7 HEX NUT, LET DRY, USE THE HEX NUT TO SCREW THE THREADED BOLT INTO THE LOAD CELL, ITEM 1.
3. ATTACH ITEM 2 TO ITEM 1, LOCK IN PLACE W/ ITEM 7.
4. RUN ITEM 8 OR 10 ONTO ITEM 3,5,6 AS REQUIRED.
5. ASSEMBLE J-BOLTS OR THREADED RODS INTO ITEM 2. ADJUST TO DIMENSIONS SHOWN, LOCK IN PLACE W/ ITEMS 8 OR 10.
6. ATTACH ITEM 4 TO ITEM 2 USING ITEM 9.
7. MINIMUM THREAD ENGAGEMENT IS EQUAL TO OR GREATER THAN THE THREAD DIAMETER.
8. THE PURCHASER OF SUSPENDED SYSTEM SCALES SHOULD ARRANGE FOR SAFETY DEVICES AS RECOMENDED BY THE SCALE MANUFACTURER'S ASSOCIATION INC.

REVISION RECORD			
LTR	DESCRIPTION	DATE	BY

QTY.	QTY.	QTY.	QTY.	ITEM	PART/DWG. NUMBER	DESCRIPTION	MATERIAL OR SOURCE	WT. EACH
4	4	-	2	10	6013-0120	NUT HEX	3/4-10 Z.P.	.119
REF	REF	REF	REF	9	6007-0009	SCW HEX HEAD	1/4-20 x 1/2 Z.P.	.012
2	2	2	2	8	6013-0130	NUT HEX JAM	3/4-10 Z.P.	.077
REF	REF	REF	REF	7	6013-0390	NUT HEX	1/2-20 S.S.	.038
PER S/O	-	-	-	6		THREADED ROD	3/4-10 UNC x LENGTH PER S/O	PER S/O
-	-	2	1	5	3501-B181-08	J-BOLT		.923
1	1	1	1	4	2970-B013-0A	GRD WIRE ASSY		0.08
-	2	-	1	3	3501-B182-08	THD ROD		.532
2	2	2	2	2	3501-B180-2A	MOUNTING ADAPTER		2.543
1	1	1	1	1	ZX 2500	LOAD CELL ASSY	2500#	2.5

PARTS/MATERIAL LIST

UNLESS OTHERWISE SPECIFIED TOLERANCE ON DIMENSIONS ARE:
 ANGLES ± 1/2°
 INTEGERS/FRACTIONS ± 1/16 IN.
 DECIMALS (.X) ± .03 IN.
 DECIMALS (.XX) ± .01 IN.
 DECIMALS (.XXX) ± .005 IN.
 NOTE: WHOLE NUMBERS MUST BE WRITTEN XX.000 TO INVOKE DECIMAL TOLERANCES.

THIS DRAWING IS THE PROPERTY OF THE CARDINAL SCALE MFG. CO. AND SHALL NOT BE USED NOR REPRODUCED EITHER WHOLLY OR IN PART EXCEPT WITH WRITTEN AUTHORIZATION. ALL RIGHTS OF DESIGN OR INVENTION ARE RESERVED.



Cardinal
 CARDINAL DETECTO FULLER WEIGHING SYSTEMS

TITLE: ASSEMBLY INSTRUCTIONS AND PARTS LIST
 2,500 # TENSION LOAD CELL ASSEMBLY
 3501-B131-0A/-1A/-2A/-3A

SCALE	NTS	DO NOT SCALE DRAWING	NEXT ASSEMBLY
DR.	GPL	DATE	5/16/02
CH.		DATE	
MODEL	SHEET	DWG. NO.	REV.
2500# CAPACITY	1 OF 1	3501-B131-GS	B