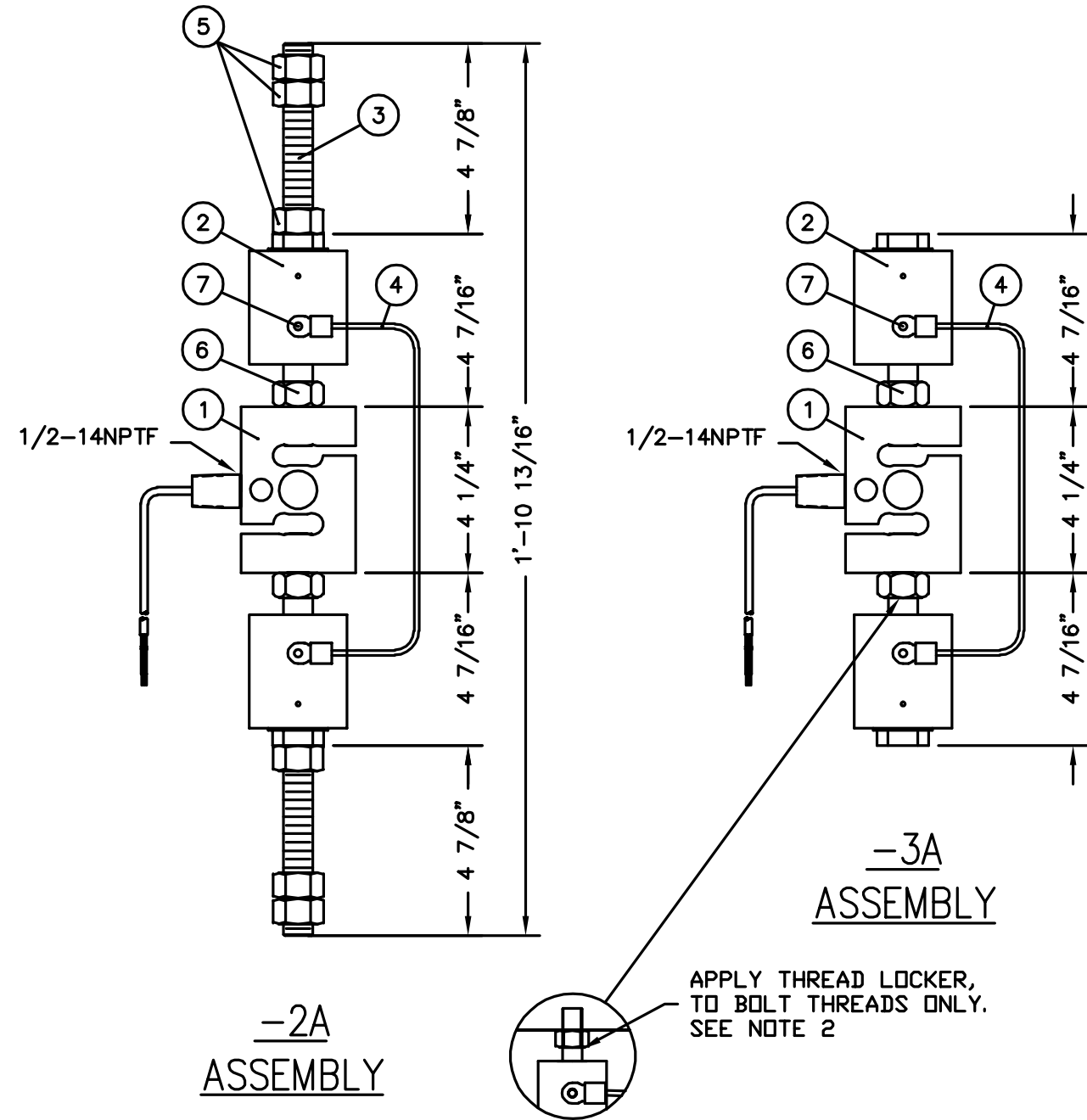


REVISION RECORD			
LTR	DESCRIPTION	DATE	BY

- NOTES:
1. LOAD CELL ASSEMBLIES HAVE 300% OVERLOAD RATING.
 2. TO ASSEMBLE, APPLY SMALL AMOUNT OF THREAD LOCKER ONTO BASE OF THREADED BOLT ITEM 2. ATTACH ITEM 6 HEX NUT, LET DRY, USE THE HEX NUT TO SCREW THE THREADED BOLT INTO THE LOAD CELL, ITEM 1.
 3. ATTACH ITEM 2 TO ITEM 1, LOCK IN PLACE W/ ITEM 6.
 4. RUN ITEM 8 ONTO ITEM 3 AS REQUIRED.
 5. ASSEMBLE THREADED RODS INTO ITEM 2. ADJUST TO DIMENSIONS SHOWN, LOCK IN PLACE WITH ITEM 5.
 6. ATTACH ITEM 4 TO ITEM 2 USING ITEM 7.
 7. MINIMUM THREAD ENGAGEMENT IS EQUAL TO OR GREATER THAN THE THREAD DIAMETER.
 8. THE PURCHASER OF SUSPENDED SYSTEM SCALES SHOULD ARRANGE FOR SAFETY DEVICES AS RECOMENDED BY THE SCALE MANUFACTURER'S ASSOCIATION INC.



PER S/O	QTY.	QTY.	QTY.	QTY.	ITEM	PART/DWG. NUMBER	DESCRIPTION	MATERIAL OR SOURCE	WT. EACH
—	—	—	—	8			THREADED ROD	3/4-10 UNC x LENGTH PER S/O	PER S/O
REF	REF			7	6007-0009		SCREW HEX HEAD	1/4-20 X 1/2 Z.P.	-
REF	REF			6	6013-0186		NUT HEX	3/4-16 S.S.	-
—	6			5	6013-0125		NUT HEX	3/4-10	-
1	1			4	2970-B013-0A		GND. WIRE ASSY.		-
—	2			3	3501-B141-18		THREADED ROD		0.7
2	2			2	3501-C201-0A		LOAD CELL MTG. ADAPTER 3/4-10 THD.		7.21
1	1			1	ZX 5000		LOAD CELL ASSY	5000#	3.6
PER S/O	19.42				WT.	PARTS/MATERIAL LIST			

UNLESS OTHERWISE SPECIFIED TOLERANCE ON DIMENSIONS ARE:
 ANGLES ± 1/2°
 INTEGERS/FRACTIONS ± 1/16 IN.
 DECIMALS (.X) ± .03 IN.
 DECIMALS (.XX) ± .01 IN.
 DECIMALS (.XXX) ± .005 IN.
 NOTE: WHOLE NUMBERS MUST BE WRITTEN XX.000 TO INVOKE DECIMAL TOLERANCES.

THIS DRAWING IS THE PROPERTY OF THE CARDINAL SCALE MFG. CO. AND SHALL NOT BE USED NOR REPRODUCED EITHER WHOLLY OR IN PART EXCEPT WITH WRITTEN AUTHORIZATION. ALL RIGHTS OF DESIGN OR INVENTION ARE RESERVED.

Cardinal
 Cardinal Scale Manufacturing Co.
 WEBB CITY, MISSOURI · USA · 64870

CARDINAL DETECTO FULLER WEIGHING SYSTEMS

TITLE: ASSEMBLY INSTRUCTIONS AND PARTS LIST FOR 5,000# TENSION LOAD CELL ASSEMBLY 3501-B187-2A/3A

SCALE	NTS	DO NOT SCALE DRAWING	NEXT ASSEMBLY
DR.	GC	DATE 6/6/02	
CH.		DATE	
MODEL	SHEET	DWG. NO.	REV.
5000# CAPACITY	1 OF 1	3501-B187-GS	B